

St Helier Methodist Centre

The **Methodist** Church AGM Reports 2026



***‘To make disciples and join in God’s mission
for change’.***

All ages, All nations, All stages of faith

Minister's Preface

Dear Church Family,

It has been a joy to serve you this year.

I truly value working alongside our dedicated team of volunteers on the management, pastoral, church council and stewardship teams. In particular, I want to express my gratitude for Sue and Libby, who have been stewards for the last 7 years and for the last couple of years have jointly served as lead stewards. As you know, they will be stepping down this year. Our prayers are with them as they continue to worship with us and find new ways to serve our wonderful church.

I am also very thankful for the management team that have overseen the general repairs and decorating of the church. Isn't it beautiful?

Thanks to Lou, we have introduced eight Sunday morning worship teams to help prepare our weekly services. They continue to function well. The next step will be to establish team leaders for each team.

This coming year we will explore how representatives from all our committees can strengthen our church ministry.

I am thrilled that the circuit has adopted a vision and mission strategy that aligns with our emerging goals. Our aim is to build joy in worship, fun fellowship, and passion in outreach. During the AGM, we will have the opportunity to approve this vision and prioritise the mission steps.

This year, we remember special individuals who are no longer with us and continue to pray for their families. Amongst them are David de la Haye, Nance Hicklin, Kay Papworth, and Margaret Wright. The church will cherish their memory.

During December we were blessed again to host many local school carol services, Sally's Nativity, the Steward's Carol Service, and Lorraine's Christingle service brought joy to so many.

I have thoroughly enjoyed co-leading the Thursday Bible Study Group with Carolyn. The groups insight into scripture and theology are highlights of my week.

This year, the centre hosted the circuit Lenten Study featuring Carmela Knight's paintings. These are currently on display in the sanctuary until Pentecost.



Many groups have met at the manse for glassmaking. This opportunity paved the way for a collaborative workshop and art display with Jersey Heritage at the Link Gallery.



I will continue to offer workshops this year, thanks to generous funding through Connect Me Jersey.

Finally, I want to personally thank Julie, Theresa, and Ewa for their hard work to keep our centre running smoothly on a day-to-day basis. I also want to thank Sally and Ellen for their dedication to our children and youth ministry. This year we anticipate a wonderful 25th anniversary for Nestlings and give thanks to Louise and her team for their commitment.

I look forward to another year of growth and service together!

Many blessings,
Rev. Keith

Pastoral Review

It is regrettable that the committee has not managed to meet as per the church diary in this last year. Through work, illness and holidays it has been impossible to find a date that has maximum benefit. Going forward, we hope to identify a more inclusive meeting time for all pastoral visitors.

It is nevertheless the case that the care for our membership has a momentum of its own and I do believe that the visitors have continued to keep in touch with the people in their group and shared any concerns with the Stewards or Rev Keith. Visits have also been made whenever possible by Rev Keith, Lorraine Wheeler and Helen Higginson and have been much appreciated by our frail membership. Many of us were able to join Roy Picot in celebrating his 90th birthday in February at his residential home. Sally and Philip Le Brocq were also well enough to join the party.

This past year we have sadly lost several of our stalwart members. We miss David de la Haye, Nance Hicklin, Kay Papworth and Margaret Wright and have celebrated their lives of service and devotion. We continue to remember them and their loved ones in prayer, secure in the belief that they are now in a better place and, one day, we will join them in the Heavenly choir.

We have been grateful for the generosity of the children and parents of Vic Prep for the Christmas hampers which we were able to distribute to needy or lonely people in our church and community.

Pastoral caring takes several forms and is a vital part of our church life. Contact by telephone, letter and home visits are precious to those who can no longer meet in worship at SHMC. Making a physical connection is uplifting and enriching for both member and visitor. We can also pray in church or at home on our own or in a group. The knowledge that someone is praying for and caring about them is something that we can all do. Please consider if this is something that you would like to do. Speak to one of the Stewards or Rev Keith. After more than 30 years as a pastoral visitor I can confirm that it is a fulfilling act of love and service.

Di Toole



Thursday Fellowship

The Thursday morning Bible Study Group continues to thrive.

The group has used the Disciple Fast Track materials to guide the group through a 22-week survey of Old and New Testament books. The sessions included a focus verse to capture an overall theme, a reflective statement called the human condition, a video commentary by scholars, an historical commentary led by Carolyn, theological questions and a Bible study method led by Rev Keith, followed by a final discipleship statement to close the study.

The purpose of the study is to connect head and heart for spiritual formation. The most exciting part of the experience is that everyone in the group facilitates the study. Carolyn's contribution to the study in particular has been exceptional.

The Bible Study Group is followed by delicious soup made by Ellen, which is served with French bread and followed by tea and cake. If you enjoy studying the Bible, please come along and join in, everyone welcome.

Keith



Children's Ministry

Weekday Groups:

We continue to run the three Mothers and Children's Groups during term time each week. These groups are well attended with lovely children and mums.

The Baby Group is always extremely busy, and anyone can walk in and be part of it, but the other two groups are regular families who get to know each other and us and become a little community. We find this more beneficial and much more relational. We do have a waiting list so when a family leave, we offer up the place.

Our current "Toddlers" have been with us since they were babies, so it will be sad to say goodbye to some of them in the summer. We have had to make their play environment more stimulating this year as many are over 3yrs and needed more than some previous year groups. Tuff trays with changing sensory items have been a big hit.

This year we have talked more about, and invited more to things happening on a Sunday, some have shown interest. We held an Easter Party and Egg Hunt the Saturday following the Easter weekend for the under-fives at Sunday School and invited this group where many came.

Music, rhymes, Mr Bible, stories and simple prayers are still very much part of our mornings.

Maureen continues to be on kitchen duty for us each day. She is an invaluable asset, Maureen was 90yrs old on the 26th April so we held a small celebration for her during that week with the mums and children.

Sally spends time with the Nursery children on a Tuesday morning, where we sing and tell stories. This is a valuable contact with these children and staff.

Many Blessings, Ellen and Sally



Sunday Children:

We have had a busy and eventful year, with lots of children and many activities.

The Sunday School is growing, which is amazing. Many parents stay with us as they have to help with their younger children. Often there are 30 of us praising God together downstairs.

We always start our session altogether, with songs, games, the story, and a prayer, then I leave the parents to sort out a pre-prepared craft/art activities for the Mini Group and go to my "Middlers"!

The weather didn't allow us to do our Lorry ride in the summer, but we managed a shortened park stop in September which went down better .

Also, in September the Middle group spent a night at the Zoo Hostel and had a Ball. They really want to do it again this year.

We also went to the Art's centre a few times to watch one of their members perform.

Keith invited us on 28th November to the Manse, for some more glass making, which they really enjoyed.

On 25th April we went on a Bible Safari. This involved going to different members of the congregation for one course of a meal then moving on. At each stop we ate and played or did an activity. A Minibus was used to transport everyone for the day. The Children were really excited and enjoyed the day.

We do try to contribute to worship occasionally, and on Easter day they all read beautifully the Easter lesson.

These lovely children are 9-12yrs old and very enthusiast, and capable. We are extremely fortunate to have them in our Church; I feel that we must nurture and support them in any way we can. And I for one feel so honoured to be part of their lives.

Altogether in November we made our annual Mini Christmas cakes. Always a winner and brings them flocking in on that day. I think I baked 26 cakes.

Towards Christmas we rehearsed the Nativity play, which we performed on the 21st December. All the children love a good Nativity Play. Although stressful at times it was worth it.

The Mini Group, the 5-9-year-olds had an outing to Lovebirds Studios on the 8th of February. They like it there, and we are always well received and looked after.

The Tinnies, the under 5-year-olds, as mentioned earlier had a late Easter Party and Egg Hunt on the 11th April. We have more than 10 families with these age children, so it's great. Sally talked with the parents on that day to find out their aspirations and concerns, so that we can cater for their children as best as we can going forward.

Good Friday - This Year's All Aged Worship service was held downstairs in the Hall.



Lorraine, Sally and Ellen led the service, which from people's comments, was very much appreciated.

We sang varied songs, which we hoped some would suit everyone. The story was told in a Godly Play way, which held even the very young one's attention. Then we made crosses from nails that had been previously hammered into wood. Even the boys liked that. We finished with a very effective prayer with nails being hammered into a wood block, just for a bit of drama.

Many of our families came, and quite a few from the circuit. A lovely mix. The atmosphere was very meaningful, and we hope people went away feeling that they had marked Good Friday in a respectful manner.

This has been a rewarding, happy year for us, and we thank all the parents who come on Sundays and, other times to support their children in our activities. We look forward to 2026/2027.

Blessings Sally



Youth Work

Last October we took our youth group to the 3Generate event, themed “Journey of a Lifetime,” which took place at the NEC in Birmingham, bringing together over 1,600 children, young people, and leaders for an inspiring weekend. We were also joined by the Morling family.

Throughout the weekend, our young people enjoyed a wide variety of activities including Bible sessions, prayer, music workshops, Lego robotics, sports, a planetarium, and more. Highlights included Big Worship at the Orb stage. The group had freedom to explore while staying connected through shared meals, worship, and a WhatsApp group. Leaders also benefited from “The Well,” a dedicated adult space.

A special moment came on Saturday afternoon during a time of reflection led by Ronan, helping us consider what God was saying and how we might respond.

The event was extremely well organised, with strong security, pastoral care, and structured daily routines. On Sunday, we joined final worship before travelling home to Jersey—tired but inspired. We extend a heartfelt thanks to everyone who supported and enabled this trip to happen.



The youth group continue to meet faithfully on Sundays down in the youth room after a short time in the Church. Attendance on a Sunday fluctuates between 4 and 12 young people. This dedicated space enables our young people to gather in a relaxed setting where they can build friendships, grow in confidence, and enjoy time together whilst building on their faith. During our sessions, we use the material Roots as a guide for our theme, and for our discussions and activities. This resource helps us explore faith in an engaging and age-appropriate way, encouraging thoughtful conversation and deeper understanding of the bible and how it relates to our lives now. Once a month we join the congregation in the Church for the whole service.

In the lead up to Christmas, we organised a few special activities for the youth.

- Glass making at the manse with Keith – a creative and hands on experience that the young people thoroughly enjoyed.
- Gingerbread stable making at the centre – a festive activity that brought lots of laughter, and creativity – a BIG thank you to Martin Delap and family for making all the gingerbread stables!
- Christmas cake making, during one of our Sunday sessions testing their cake making skills!

These events provided a valuable opportunity for the youth to relax, connect, and enjoy one another's company during the busy Christmas season.

It has been encouraging to see our young people becoming more involved in church services, taking part by reading bible verses, leading prayers and waving flags from the balcony, demonstrating growing confidence and a willingness to serve within the wider church family.

More recently we have decided to meet around the piano after Sunday worship with the aim to slowly and with no pressure to build a youth worship band, as this is one of the things the youth have said they would like to try, after attending 3Generate. We hope this will help our youth to

- Use their musical and singing talents
- Grow their confidence as they share their gifts
- Create opportunities for them to contribute meaningfully to worship

We would value your prayers for our youth, especially for those who have their GCSE exams and A level exams this year, and for the time Marcia and I spend with them on a Sunday. Thank you Ellen and Marcia

Ellen & Marcia



Kairos Arts

This year has marked a defining season for us...

We have delivered:

- 694 creative and therapeutic sessions across all programmes.
- 496 individual participants have been supported.
- And 22 organisations across Jersey have partnered with us!

Through creativity, play and therapeutic connection we have seen hope restored, relationships strengthened and individuals reconnected to their sense of self-worth.



We have delivered **620 one-to-one interventions for children and young people (CYPs)** in 8 school settings (Grands Vaux, St Lawrence, Janvrin, Haute Vallee, Grainville, St Mary, Mont Nicolle, St John and Jersey Hospice Care), supporting around **30 children and young people every week**.

The ripples of impact are felt by the children, but also families report improved confidence, calmer moods, better relationships, and teachers describe increased participation, social connection and less anxiety.

One child reflected on their sessions:

“I still carried pain but now hope as well. I am happier.”



In partnership with JAAR, Freeda, JDAS, Venetia House, Community Navigators we delivered **3 six-week group programmes** this year for women affected by domestic abuse or sexual violence (DA/SV). Self-confidence was significantly increased, according to participants and they expressed no longer feeling alone and more courageous. One said:

“The gentle support of the facilitators was second to none. Non-judgemental, accepting atmosphere. Truly life-enhancing.”

We offered **monthly drop-in therapeutic arts sessions** across the year for past-participants of our DA/SV programmes, building a strong sense of community and a space for ongoing healing through creativity and connection. Out of this group developed our annual Art Installation project, co-facilitated by a member of the group with lived experience of domestic abuse, held in Jaro – a public Art Gallery in St Helier. It was called “Igniting” and expressed the hope the group have found, starting with an inner spark and then a journey from darkness to light.



Engagement ranged from quiet conversations with men and women about their own experiences, to ITV film crews and wellbeing sessions in the space. The exhibition ran for a fortnight for the first time and was supported by RBC volunteers as well as Kairos team members. Thanks to all those who visited. Your engagement was of huge encouragement to those who made the artwork.

We ran a powerful **six-week group programme for Brighter Futures Mums** at the Bridge with onsite creche. One participant reflected, “**Wow, what an experience. I was optimistic and unsure about how exploring my feelings through art would work but being given the time, equipment and safe space to create was wonderful. I left each week feeling lighter.**”



To meet significant demand and equip others in Jersey to work at this high level with CYP, Kairos Arts has partnered with **Create Hope** (a UK training provider) for delivering **Level 3 and Level 6 training in creative and therapeutic arts**. The trainer, Catherine has exceeded all expectations, is full of faith and loves coming to Jersey to equip our students. We also hosted a **2-day conference** at the Radisson for 35 professionals working with children and young people with special educational needs.

In November 2025, we spent a week in Kolkata, India and delivered a series of therapeutic arts and wellbeing workshops across multiple community, NGO and workplace settings. Working alongside local translators and social workers to ensure cultural sensitivity and accessibility we reached over 114 participants across 6 structured workshops, for women (aged 18 to 70+) with one session including two male participants. “**They will remember this for the rest of their lives. They never have time for themselves. It’s beautiful.**”





Our Community Engagement has increased considerably. The **Stitch, Snip and Natter** groups have run at the Salvation Army, Maison le Corderie, Stuart Court and now at Santander Work Café in St Helier. These groups nurture connection, wellbeing and purpose, as each participant is involved in making resources which benefit those attending our programmes. Some learn to knit or crochet from scratch and help to make blankets, others snip images out of magazines for collage work. These groups have engaged children, teenagers and those in their 90s!

Lou Hicklin, our Products Champion has successfully shared our stories and sold products at different groups across the island this year. These events were enhanced after our international trip this year to Kolkata where we were able to purchase many new products from Freedom Businesses offering dignified employment to those previously exploited and abused. We have also commissioned new products coming soon...



We've had fun fundraising – thank you to all those who have supported our endeavours. We had an India Night to raise funds for our trip, then for general funds we focused on a Jazz Night at The Sundown, and our beautiful Advent Concert with the Amity Singers, generously hosted by SHMC. We continue to apply for financial support through private donations, corporates, trusts and foundations, and we are so grateful for our regular individual givers – thank you to those at SHMC who support us in this way!

So, in conclusion, we thank God for the provision of all our funding, partnerships, and for evidence of so much impact, but particularly SHMC's gift of premises and your prayers. We are excited to see what God has planned for us next!

Cathy

Café

The café is open Monday to Friday each week, offering tea and coffee when a member of staff is available. It continues to operate as a donations café, supporting local charities.

Our aim is to provide the community with a friendly, welcoming, and warm space.

On Thursdays, the café hosts a Bible study, with up to 15 people attending. Recently, the group has been exploring the Discipleship Course led by Keith and Carolyn. Each week, Ellen and Maureen serve soup after the session, with French bread, followed by cake.

On Fridays, Move More Jersey, in partnership with Jersey Mencap, continue to use the hall to play Boccia. Afterwards, they come into the café for hot drinks and biscuits, served by Di and Mirto. This continues to be a great success.

Hopes for the Future

- To open the café more fully in some form.
- To encourage more volunteers to help serve tea and coffee during the week, especially during the summer months when we have more visitors.
- To welcome more people to use and enjoy the café area.

Many Blessings Ellen



Management

The year has been mainly focused on material repair work to the Portico. Management are pleased to announce that the works have been successfully completed. This was a material project both in terms of the financial commitment and the time required from managing various elements of the project. While there were delays in the completion of the work due to unforeseen areas requiring further attention, there has not been additional costs outside of the budgeted amounts and contingency funds approved at the time of commissioning the project. The Management team are grateful to the church's support and patience while these major works were being carried out. The church has been understanding and supportive given the amount of time the project required.

While some painting of the church was done during the time of the repairs as part of restoration works, the facade had not been fully painted as it was considered inappropriate to proceed with painting in cold weather. The painters recommended that painting between spring and summer would increase the durability of the painting. The painting is currently in progress and expected to complete in the coming weeks.

There has also been some impact on the roof following storm Goretta in January. The current expectation is that the work will be covered by insurance and completed whilst the scaffolding is up for the painting.

Other nonmaterial repairs and maintenance work continue at the church and we extend our appreciation and gratitude to the army of volunteers particularly Martin, David and Malcolm who have dedicated material amounts of time in ensuring that the Portico and other property related projects are well managed. We also remain grateful to Julie, our centre manager who ensures that issues are quickly raised and resolved to keep the centre running smoothly.

Finance details are included in the Treasurers report.

Our financial reports are ready and can be seen as separate reports.

Simba (Chair of Management & Finance Committee)



Treasurer's Report

Comments on the Accounts

The independently reviewed accounts for the Church and Nursery for the year ending 31st August 2025 are presented below.

The Church recorded a deficit of £82,004 for the year, compared to a budgeted deficit of £45,817—an adverse variance of £36,187. This outcome reflects a combination of income falling slightly short of expectations and expenditure running significantly over budget.

Total income of £309,134 was marginally below the budget of £310,486, a shortfall of just £1,352. The largest variance was in donations, down £2,090 on budget. Last year's donation income had included a one-off £20,000 gift to establish the Peter Luce Legacy Fund. Room hire continues to perform well, exceeding budget by £2,453, thanks to ongoing support from the Street Dance Team and growing use by other community groups. Bank deposit interest came in £13,442 above budget, benefiting from higher interest rates and substantial balances held with the Central Board of Finance. However, cash collections and covenants were £16,317 below budget, with a further £1,465 shortfall in the associated tax refunds – management identified that the reduction in giving was largely because members no longer carry cash and a Sum-up machine was introduced during the year. We are happy to report that we are seeing traction here.

Expenditure totalled £391,138, some £34,836 over the budgeted £356,302. The principal overspend was in planned repairs and maintenance, which ran £38,373 over budget. This was largely due to £60,537 spent on essential roof and front of church repairs, alongside a £10,028 transfer to the General Property Fund. It must be noted that major repairs and maintenance during the year were a catch-up due to planning delays, otherwise we had positive variances here in the previous years. The Circuit Assessment was £10,681 over budget at £98,439, reflecting both the Church's quarterly circuit contribution and its share of the Nursery surplus.

Staff costs were broadly on track. Salaries came in £1,095 under budget at £119,051, though this was partly offset by £927 in unbudgeted overtime. The delayed launch of pension contributions produced a £5,246 saving. Smaller overspends appeared in professional fees (£474), Junior Church and Youth work (£820), and miscellaneous expenses (£1,094).

The Nursery contributed £100,000 to support Church operations, recorded under miscellaneous income and 25% of this is payable to Circuit

The Nursery reported net income of £139,175, compared with a budgeted surplus of £29,241, resulting in a favourable variance of £109,934. This outcome reflects consistent operational delivery supported by prudent financial management.

Fee income was below budget (£840,145 actual vs £899,092 budget), primarily because the budget assumed an average of 41 children, whereas the actual average was 39. Notwithstanding this variance, occupancy remained at a healthy level throughout the year.

Operating expenditure was significantly under budget. Total costs were £712,616 against a budget of £872,651, a saving of £160,035. The principal contributor was staff costs, which totalled £525,078 compared with a budget of £663,526, a favourable variance of £138,448. This reflects a tough

labour market complimented by careful workforce planning. Additional savings were achieved across training, cleaning, property maintenance, advertising, and sundry costs.

Interest receivable amounted to £7,621, exceeding the budget of £2,800 by £4,821, driven by higher returns on cash balances held with the Central Finance Board and Lloyds Bank.

In line with previous practice, £100,000 was transferred to SHMC reserves during the year. After this transfer, the Nursery's unappropriated surplus increased from £372,086 to £411,261 at 31 August 2025. The balance sheet remains robust, with net current assets of £411,261, underpinned by cash at bank and in hand of £440,013 and relatively low current liabilities of £31,823.

Overall, the 2024/25 financial outcome demonstrates sound financial stewardship, effective cost control, and a strong basis for the Nursery's continued operations.

Ewa & Rhodrick

A pleasing result for both the Church and the Nursey given the magnitude of repairs and maintenance in the year and the staffing challenges in the Nursery.

Management welcomes the result and wish to congratulate the Church Council, Church and Nestling Staff, and Louise for her leadership. Gratitude to Ewa for her excellent maintenance of the Church and Nursery Accounts.

Rhodrick Chatikobo CA(SA), ACA

ST HELIER METHODIST CENTRE NESTLING DAY CARE CENTRE BALANCE SHEET AS AT 31 AUGUST 2025					
		2025		2024	
		£	£	£	£
Note					
CURRENT ASSETS					
	Debtors and prepayments	3,072		2,729	
5	Stock	-		-	
7	Cash at bank	439,907		425,064	
	Cash in hand	106		45	
		443,085		427,838	
LIABILITIES: Amounts due within one year					
	Fees received in advance	8,641		14,601	
8	Parents deposit fund	11,250		12,250	
9	Sundry creditors and accruals	11,932		28,901	
		31,823.73		55,752	
	NET CURRENT ASSETS	411,261		372,086	
Represented by:					
	UNAPPROPRIATED SURPLUS	411,261		372,086	

**ST HELIER METHODIST CENTRE
NESTLING DAY CARE CENTRE
INCOME & EXPENDITURE ACCOUNT
FOR THE YEAR ENDED 31 AUGUST 2025**

2026 Budget	INCOME	Note	2025 Actual		2025 Budget		2024 Actual		2024 Budget	
			£	£	£	£	£	£	£	£
768,982	Fees receivable	1		840,145		899,092		871,913		886,971
2,800	Interest receivable	2		7,621		2,800		9,588		2,800
-	Other income (Donation)			4,025		-		1,420		-
<u>771,782</u>				<u>851,791</u>		<u>901,892</u>		<u>882,921</u>		<u>889,771</u>
	EXPENDITURE									
438,658	Staff costs	3	525,078		663,526		570,140		615,028	
3,300	Training	3	1,382		3,200		5,744		3,000	
21,900	Toiletries & Food	4	19,090		21,400		20,532		20,240	
1,300	Art materials		1,389		1,300		613		1,200	
5,100	Equipment repairs & maint.		6,717		4,500		90		1,800	
99,000	Methodist Church service chg		99,000		99,000		99,000		99,000	
1,900	Rates		1,886		1,900		1,837		1,800	
2,700	Advertising/printing/stationery		636		2,700		962		2,500	
530	Telephone & postage		589		525		570		504	
1,700	Bin servicing		1,425		1,700		1,378		1,600	
23,900	Cleaning		18,903		23,300		17,937		22,000	
8,100	Accountancy	6	5,735		7,900		7,212		7,500	
27,100	Property maintenance & repairs		14,230		26,400		11,671		25,000	
11,400	Professional & Subscription fe	10	11,919		11,100		9,261		10,500	
1,600	Sundries		2,787		1,600		6,011		4,000	
2,700	Toys & books & equipment		1,849		2,600		2,026		2,500	
<u>650,888</u>			<u>712,616</u>		<u>872,651</u>		<u>754,983</u>		<u>818,172</u>	
<u>120,893</u>	NET INCOME BEFORE GRANTS		<u>139,175</u>		<u>29,241</u>		<u>127,938</u>		<u>71,599</u>	
<u>120,893</u>	NET INCOME FOR THE YEAR		<u>139,175</u>		<u>29,241</u>		<u>127,938</u>		<u>71,599</u>	
	Balance brought forward		372,086				344,148			
	Transfer to SHMC Reserves		<u>(100,000)</u>				<u>(100,000)</u>			
	Balance carried forward		<u>411,261</u>				<u>372,086</u>			

ST HELIER METHODIST CENTRE

NESTLING DAY CARE CENTRE

NOTES TO THE ACCOUNTS

FOR THE YEAR ENDED 31 AUGUST 2025

- 1 Fee income is lower than anticipated as the budget was based on 41 children and the Nursery average number of children was 39.
- 2 Interest received from the Central Finance Board amounted to £1,456. The remaining interest of £6,164 was earned locally by placing funds on to fixed and call accounts with Lloyds Bank.
- 3 Staff costs have again been tightly controlled for the year which has resulted in another pleasing reduction in anticipated costs. Lower average number of staff is also reflected in lower total staff costs compared to the previous year.
- 4 Food and toiletries expenditure remains tightly controlled and the result is once again pleasing, especially as food costs have risen substantially during the year.
- 5 There were no items of value held in stock at the end of the year.
- 6 Accountancy services were below the budget. Costs in the previous year included fees of two rather than one finance manager during the handover period.

7 Cash at bank is made up of:

	2025	2024
Central Finance Board monies	33,559	32,103
Lloyds TSB Jersey	406,348	392,962
	-----	-----
	<u>439,907</u>	<u>425,064</u>

- 8 The parent's deposit fund is made up of deposits in the sum of £250 each.

- 9 Creditors and accruals are:

	£
Allowance for IT IS and Social Security Aug payments	7,214
Allowance for various cleaning invoices	2,490
Allowance for accountancy and subscriptions costs	665
Allowance for staff costs related to Aug	631
Allowance for various food invoices	325
Allowance for repairs invoices	235
Allowance for printing and art materials	235
Allowance for petty cash outstanding transfer	100
Allowance for telephone for Aug	38

	<u>11,932</u>

- 10 The Nursery has agreed a regular payment plan with Law at Work to cover the cost of various personnel and staffing advice and guidance. Subscription costs included £677 paid for the accounting system.

ST HELIER METHODIST CENTRE

GENERAL FUND

INCOME & EXPENDITURE FOR THE YEAR TO 31 AUGUST 2025

2026 Budget	INCOME	Note	2025 Actual		2025 Budget		2024 Actual		2024 Budget	
£			£	£	£	£	£	£	£	£
56,667	Cash collections & covenants			40,743		56,667		45,268		56,667
10,000	Inc tax refunds on covenants			8,535		10,000		8,398		10,000
-----				-----		-----		-----		-----
66,667				49,278		66,667		53,666		66,667
6,667	Less tf to 10% reserve fund			4,928		6,667		5,367		6,667
-----				-----		-----		-----		-----
60,000				44,350		60,000		48,299		60,000
13,100	Rent from flats 1&2			12,786		12,785		12,096		12,096
27,700	Room Hire	5		29,453		27,000		35,289		25,000
3,600	Donations	6		1,510		3,600		22,815		3,600
99,000	Nursery rent			99,000		99,000		99,000		99,000
10,900	Bank deposit interest	7		24,042		10,600		22,372		10,000
-	Quoted investment income			54		-		62		-
(2,500)	Catering			(2,062)		(2,500)		(2,620)		(2,500)
-	Holiday club			-		-		-		-
100,000	Miscellaneous income	8		100,000		100,000		187,357		100,000
-----				-----		-----		-----		-----
311,800	TOTAL INCOME			309,134		310,486		424,671		307,196
	EXPENSES									
4,100	Accountancy/treasurer fees			3,553		4,000		3,286		5,500
108,156	Circuit Assessment	9		98,439		87,758		105,414		98,430
124,146	Staff salaries	10		119,051		121,051		112,631		112,631
-	Staff Overtime			927		-		951		-
8,069	Staff soc sec Er costs			7,859		7,868		7,106		7,321
5,380	Staff Pension			-		5,246		-		-
1,000	Pension set up costs			-		849		-		-
-	Staff training			-		-		1,346		-
20,100	Oil			16,128		19,600		16,013		18,500
8,100	Electricity			6,919		7,900		6,004		7,500
3,300	Water			3,056		3,200		2,046		3,000
500	Rates			284		500		691		480
600	Telephone			638		600		642		600
11,400	Insurance			11,254		11,100		10,349		10,500
3,800	Cleaning - Agencies			2,248		3,700		2,072		3,500
1,900	Cleaning - Materials			1,343		1,900		1,321		1,800
3,830	Printing, Stationery & Postage			2,124		3,730		2,645		3,530
15,000	Repairs & maint - routine	11		15,000		15,000		15,000		15,000
50,000	Repairs & maint - planned	11		88,373		50,000		23,385		50,000
3,300	Professional & subscription fees			3,674		3,200		3,283		3,000
400	Jr Church & Youth work			1,220		400		1,962		360
500	Sundry Equipment			-		500		-		500
200	Messy Church			-		200		-		150
-	Youth Work			43		-		-		-
1,500	Connexional Funding			1,412		1,500		1,412		1,412
6,700	Miscellaneous expenses	12		7,594		6,500		7,761		6,159
-----				-----		-----		-----		-----
381,981										
(70,181)	RESULT - PROFIT/(LOSS)			<u>(82,004)</u>		<u>(45,817)</u>		<u>99,350</u>		<u>(42,677)</u>

**ST HELIER METHODIST CENTRE
BALANCE SHEET
31 AUGUST 2025**

	Note	2025		2024	
		£	£	£	£
CURRENT ASSETS					
Cash at banks	1	70,856		53,482	
Cash at Central Board of Finance		466,738		543,578	
Petty Cash		404		660	
Debtors and accrued income	2	8,567		5,102	
Prepayments	2	27,216		27,290	
Stock		1,007	574,788	1,258	631,371
 CURRENT LIABILITIES					
Creditors	3	52,271		33,941	
Accruals	3	7,474		9,049	
			59,744.65		42,991
			515,044		588,380
 REPRESENTED BY					
General Fund (Unrestricted)			104,871		186,137
Minister's Discretionary Fund			5,345		2,910
General Property Fund (Restricted)			38,895		28,867
In & Out Collections (Restricted)			561		261
Mrs LS Nicolle Endowment Fund (Restricted)			1,381		1,326
Advertising Fund (Restricted)			431		431
Parking Fund (Restricted)			429		429
Peter Luce Legacy Fund (Restricted)			19,745		20,000
10% Charities Fund (Restricted)			7,708		5,418
Little Rascals Fund (Restricted)			1,000		1,000
Esperado Fund (Restricted)			1,848		1,984
M Tourtel Memorial Fund (Restricted)			3,409		6,497
Daryl De Gruchy Legacy	4		329,422		333,120
TOTAL CHURCH FUNDS			515,044		588,380

ST HELIER METHODIST CENTRE
OTHER FUNDS - 31 AUGUST 2025

In & Out Collections	£			£
		Balance b/f	261	Mrs L S Nicolle Endowment Fund
		Various receipts	2,593	
		Less paid to:		
		250 Circuit service	1,048	31.8.25
		Action for Children donations	524	
		Riding for the disabled cafe donations	258	Minister's Discretionary Fund
		Christian Aid	255	
		Family Nursing cafe donations	208	
31.8.25		Closing balance	<u>561</u>	
10% Charities Fund	£	Balance b/f	5,418	
		Transfer from General Fund	4,928	
		Trf from Minister's Discretionary Fund	470	31.8.25
		Less paid to:		
		Electricity vouchers	700	Advertising Fund
		Food vouchers	657	
		Watoto funding	552	
		All We Can the Methodist relief fund dona	500	31.8.25
		SAT-7 donation	500	
		Children in need Nursery fundraising matcl	149	Little Rascals Fund
31.8.25		Christians Together	50	
		Closing balance	<u>7,708</u>	
Daryl De Gruchy Legacy	£	Balance b/f	333,120	31.8.25
		Less paid for:		
		Digital mixer & PTZ Camera Bundle	3,698	Michael Tourtel Memorial Fund
31.8.25		Closing balance	<u>329,422</u>	
Peter Luce Legacy Fund	£	Balance b/f	20,000	
		Less Andium Engineering	255	
31.8.25		Closing balance	<u>19,745</u>	31.8.25
General Property Fund	£	Balance b/f	28,867	Esperado Fund
		Tf from inc/exp	10,028	
31.8.25		Closing balance	<u>38,895</u>	
				31.8.25
Parking Fund	£	Balance b/f	429	
		No movement in period	-	
31.8.25		Closing balance	<u>429</u>	
		Balance b/f		£
		Transfer from General Fund		1,326
		Closing balance		<u>54</u>
				<u>1,381</u>
		Balance b/f		£
		Glass payment from Gov.je		2,910
		Add food bank donations		2,765
		De Gruchy Remembrance service donation		2,633
		Less Glass expenses		279
		Tf to 10% fund for vouchers		2,738
		Food bank from cash donated		470
		Closing balance		<u>34</u>
				<u>5,345</u>
		Balance b/f		£
		No movement in period		431
		Closing balance		<u>-</u>
				<u>431</u>
		Balance b/f		£
		Add net income		1,000
		Less expenses		1,986
		Less transfer to General Fund		1,194
		Closing balance		<u>792</u>
				<u>1,000</u>
		Balance b/f		£
		Add 3Generate donations		6,497
		Add bank interest received		1,200
		Less 3Generate projects		364
		Less Youth Zoo visit		4,392
		Closing balance		<u>260</u>
				<u>3,409</u>
		Balance b/f		£
		Cake and Book sales		1,984
		Less Tf to Esperado project		464
		Closing balance		<u>600</u>
				<u>1,848</u>

ST HELIER METHODIST CENTRE
NOTES TO THE ACCOUNTS
31 AUGUST 2025

1 We continue to maintain a balance of cash in Jersey (and now mainly use Lloyds Bank) to cover general running costs.
The Central Board of Finance offer better interest rates on cash deposits and so the majority of funds are held there.

2 Debtors, accrued income and prepayments are:	£
Methodist Circuit assessment fees	19,515
GST Recoverable	7,380
Methodist Church Insurance (7 m)	7,183
Petty cash owed and other debtors	737
CCLI Licence (10m)	513
Minister's Fund	270
Sundry Collections	186
	<u>35,783</u>

3 Creditors and accruals are:	£
Circuit share of Nursery profits 23/24 & 24/25	50,000
Audit and Accountancy Fees	3,334
Utilities & Cleaning	2,556
IT IS and Social Security Contributions Aug invoices	2,271
Repairs & Maintenance	865
Little Rascals and Minister's Fund	575
Miscellaneous Expenses	144
	<u>59,745</u>

4 The Daryl De Gruchy Legacy Fund is being used for specific one-off projects/expenses and its use is controlled by the Stewards.

5 Room hire receipts were pleasing during the period and we remain very grateful to the Street Dance Team for their continued support. We are fortunate to have also other organisations using the centre which is resulting in much improved income.

6 Donations in the previous year included £20,000 received to create the Peter Luce Legacy Fund.

7 Bank deposit receipts were pleasing and interest rates are currently much higher than they have been for some time. The current higher than budgeted rates are welcome.

8 Other income include the Nursery 2024 profits of £100,000.

9 Circuit Assessment fees include quarterly fees and share of Nursery profits.

10 Staff costs are higher and include annual increase and staff overtime.

11 The total repairs and maintenance costs include £60,537 in respect of the Church's roof repairs. and a transfer of £10,028 to the General Property Fund.

12 Miscellaneous expenses include:	£
Books, AGM Books, yearbook, advent calendars and booklet	1,901
Visitors	708
Good Moves and Stansfield Signs costs	702
CCLI licence	650
Computer expenses	587
Christmas Decorations and Banners	575
Carpet cleaner	236
TV Licence	170
Bank Service Charges	131
Miscellaneous expenses under £200	1,935
	<u>7,594</u>

Office

Firstly, I would like to say that it has been a pleasure getting to know and working with Keith this year.

It has been another busy year in the office with our ongoing long-term lettings and the concerts held in the Church. We have also faced some challenging times, particularly with the boiler issues in February and storm damage to the roof following yet another storm in January.

We continue to welcome our long-term lettings, which remain unchanged:

- Emma-Jane Dance Academy
- AA
- Backbeat
- Move More Jersey (Jersey Mencap)
- Street Pastors
- Kairos in Ruby Ferguson House

Christmas is always a busy time, when we welcome several schools to the Church for their Christmas services. Other events held in the Church this year included Music in Action, the Jersey Island Singers, the Jersey Festival Choir, the JCG Leavers' Service and the Eisteddfod.

Foodbank work continues, with most food and electricity referrals coming through Citizens Advice, along with some electricity referrals from Grace Trust, as they do not provide electricity support. During 2025 we supported 89 people, distributed 111 bags of food and provided £1,150.00 in electricity support.

We have also changed the way we provide electricity assistance. This is no longer done through paper vouchers; instead, clients' meters are automatically topped up by the JEC following instructions from SHMC.

I would like to take this opportunity to thank everyone, including those from other churches within the Circuit, who continue to make donations and support this important work.

Looking ahead to the coming year, we hope to continue supporting our community through the use of the Church, maintaining our valued partnerships with long-term users, and providing practical help through the Foodbank and other outreach activities.

Julie



Stewards

Summer 2025, Sue, Sally and Ellen put together an appeal for help from Circuit churches for people to help to run a 9–12-year-old group of around 8 from our own church youngsters. Further to our appeal, the Circuit have developed a job description for a **Youth work Enabler** who will have a role of developing youth work across the Circuit by supporting individual church members to develop their own skills in this crucial area of expertise. **Update** – no suitable candidate has emerged; job description to be re-written and redistributed in Jersey and UK. In the meanwhile, the 9-12 age group is meeting in the piano room with Sally for more age-specific bible study.

Rev Keith organised a **Circuit Beach Service and Beach picnic** at Greve de Lecq at the National Trust property. This was well attended by some 70 people across the Circuit; Sally and Ellen prepared suitable material and resources for a group of young people.

September- we celebrated our **25th Anniversary** of merger of Aquila and Wesley Grove to form St Helier Methodist Centre. Rev Mark Haynes, accompanied by his wife Ros, were invited over to preach and we had very happy memories of the activities and events that raised the necessary funds for this huge project. We enjoyed a Bring and Share meal for some 70 people and the stewards send our grateful thanks to all who contributed in any way to that successful social event.



We look forward now to our Nestling Day Care's 25th anniversary celebrations planned for September 2026 which will strengthen links between nursery and church families.

Continuing the theme of **Celebration and Participation**, **Harvest Festival 2025** was a delight of Flower Festival (enormous thanks to Angela Noel and friends), Art Exhibition (with valued support from Sue's art class), hobbies and pastimes, reflecting the many imaginative ways that we all celebrate God's inspiration in our lives. Produce was collected for the church Foodbank, which is overseen by Julie, office manager, who can also give out electricity vouchers to those who are referred by Citizen's Advice.

Lou Hicklin introduced the idea of **TEAMS** for organisation of Sunday services, and these are running efficiently, enabling the stewards to concentrate on other aspects of their stewardship roles. For the future, it would be helpful to designate a **TEAM Leader** as a link person to co-ordinate their weekly team. Libby, Lou and Sue urge you to look at the **TEAMS** rota in good time. Julie puts specific names in the weekly Notice sheet and can provide you with a printed copy if necessary. We are getting better at remembering which is our **TEAM!** We thank Lou for this complex job of co-ordination.

Sunday sermons and talks are now being uploaded to our new **YouTube channel**, found by searching 'The Centre St Helier Methodist' or by scanning the link from the service sheet. Thanks, Malcolm and AV guys! Have you viewed yet? Feedback welcome!

In December, four schools (JC Prep, Vic Prep, Janvrin, Rouge Bouillon) held their Christmas services at SHMC over the Christmas period. With Martin and Jan le B away in foreign parts, the audio-visual rotas and necessary tasks were ably organised by Malcolm Salmon, and we thank him deeply for his generous gift of time.

Victoria Prep school donated a large number of food and treats hampers which were taken by stewards, Kairos, and other pastoral committee members to our housebound folk and other island charities who deal with those who would appreciate a Christmas treat.

The Church was decorated most attractively by Sally and David, Ellen, and a group of our ladies and gentlemen. The church family kindly donated colourful baubles and the Christmas trees were arranged on the windowsills with a material background to enhance the lights- fitting in with the theme of Light and Water for December and January services. It is heartening to see the young people's artwork on display in the vestibule and downstairs in the hall. There's always something colourful and pertinent. Do go in and look!

Our own **Christmas Carol service** was well attended as was the Nativity on Sunday 21st Dec. The Christingle on Christmas Eve reached out to parents and children not necessarily with ties to our church. We were able to hand out the spare oranges on Christmas morning when friends from other churches in our circuit joined us. Keith led a Feast of Light and Water service in January.



Over the last year we have lost several of our **dear friends** and we remember them here; Enid Davis, Joyce Duffield (formerly Porter) Kay Papworth, Reggie Boison (Aquila), Margaret Wright, Nance Hicklin, David de la Haye. We hold them before You, Oh God, and they and their families are in our prayers.

We have welcomed families for **3 baptisms** -Jasiah Italo Clarence Tuguib, Lexi Faith Pamela Warstat and Jago McNelly.

Church chairs- after a new consultation with various interested parties that extensively use the body of the church, Church Council voted to replace all the existing church chairs with lighter stackable models. Estimates have been procured from Alpha Furnishing UK and are with Property and Finance.

Our church building is still frequently used for concerts and events by outside organisations which brings an acknowledgement of our church standing in our town community. Stewarding of these events is largely devolved to the organisers, which works well in most cases, although we might have a wry smile when things aren't put back quite in the same configuration that we expect.

Charity donations 2025-2026 from 10% Fund include....

Bible Society £1000

All We Can for Gaza appeal £1000

Kairos for forthcoming trip to India £500

Action Aid £200

Melissa Hurricane appeal £750

Carmela Knight (for loan of Artwork) £500

Rev Keith will be on sabbatical from June 1st to September. We wish him a restful and yet stimulating break and look forward to his invigorated return.

Libby and I have reached the end of our tenure as stewards and will be standing down at the AGM in May. We thank the other members of the steward team- Martin Delap, Rodney Mutenure, Leiden Bherwani- for their fellowship and support, and we are grateful to those stewards we have worked with over the last 7 years - Ann Paul, Simba Mashiri, Val Macdonald, Ajay Bherwani, Lou Hicklin and remembering Kay Papworth.

Please consider whether you could help in the running of our church or could speak persuasively to someone else! Stewarding is such a rewarding task and integrates you further in the life of our Church and your personal Christian witness. Speak to a steward or Keith who can tell you more.

Sue de Gruchy and Libby Farnon, Senior stewards



[Nestling Nursery](#)

The nursery staff continues to thrive with their (CPD) continuous professional development. All mandatory training is up to date which is paramount to keep us relevant in our practice, this helps us to support the individual child to ensure that they have the best possible outcomes for future learning. Working alongside other professionals and outside agencies has supported us in our practice to help identify when a child needs further support by using initiatives which are recommended to support the individual child.

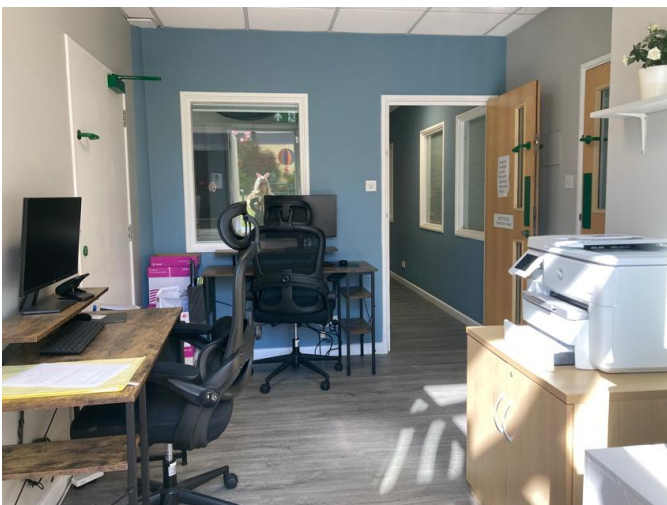
We will be having our yearly review undertaken this month from our regulators from (CEYS) Children and Early Years Services. We look forward to welcoming our review officer to the nursery and welcome any feedback which will help us stay compliant with our regulations, policies and practices.

Two members of the team are undertaking their level 2 qualifications in child Care and Education we are hoping that this will encourage both staff to apply for the level 3 Diploma in Child Care & Education in September 2026. We are working closely with their tutors at college. We have a level 3 student from Highlands College, who attends Nestling for her placement on Thursday & Friday, she is an exceptional student who qualifies this year, and the student is enjoying her placement here at the nursery and has spoken to me about coming on board as a fulltime member of staff which is great news.

We had an anonymous donation of £2,000 given to us. The money was used to create a new study area for the staff, we purchased new computers, computer desks and suitable chairs, we also purchased an A3 printer which is required for our observation sheets for the new In the Moment Planning initiative that we implement to support the children in their learning, development and wellbeing.

The anonymous donor was very impressed with how we used the money; they decided to support the nursery further by purchasing new tailor-made photo frames for the staff at a cost of £750 for our notice board. We will be forever grateful for this very generous donation

We are still very much involved with raising money for a chosen local charity each month. We feel that this is a great opportunity to give something back to all charities that continue to help families in Jersey. We have now moved to using a QR code for online donations which is helping to raise more money for all these wonderful charities.



Louise Jones-Butel, Nursery Manager



[Minutes of St Helier Methodist Centre Annual General Meeting
held on Sunday 17th May 2025 10.30 am](#)

Welcome and Devotions	Led by Rev Dawn Saunders, Superintendent Minister
Hymn	StF 152 This is the day
Attendance and Apologies	33 members were present in church. Apologies from Carolyn Ainsworth, Nell Hurst, Martin Delap, Marcia Lee, Sally Vasselin, Ellen Davey, David Vasselin, Jane Ward, Nance Hicklin.
Approve Minutes from 2024	There were no significant matters arising. The minutes from 2024 were approved and signed as an accurate record.
Prayers for those promoted to Glory	Thanks to God for Gordon Bullock, Pam Marett, Enid Davis for all their efforts and witness for God over their church lives at St HMC and elsewhere. Prayers were offered for their families, and a minutes' silence was held.
Hymn	StF 401 Come Sinners to the Gospel Feast
Appointment of church stewards	Libby Farnon and Sue de Gruchy will stay on the stewards' team for one more year, despite their 5 years commitment being completed, in order to help develop teams of assistant stewards with Lou Hicklin who will have less input into the team when she resumes her Local Preacher training starting in June. Martin Delap and Rodney Mutenure will continue on the team and Leiden Bherawni has agreed to join us. Sue de Gruchy will take more responsibility for the Senior steward role. Thanks, cards and the gift of a prayer resource book, were offered to Ajay Bherwani and Francis Quansah . It was noted that there is a large cohort of our church family that are constantly involved in rotas to provide flowers, refreshments, bible readings etc. We thank God for the goodwill and good grace of our church family.
Appointment of Reps to Church Council	Martin and Jan le Boutillier have stepped down and Ellen Davey, George Hicklin and Malcolm Salmon have been invited to join Church Council although status of membership, where appropriate, to be confirmed.
Appointment of reps to Circuit meeting	Reps to Circuit meetings are Sue de G (steward), Rhodrick Chatikobo, (church treasurer) and 2 lay reps- Di Toole and Val Macdonald .

Request for Church Council and AGM Secretary	<p>Rev Dawn reiterated firmly that there must be an appointed Church secretary for the Church council and the AGM. It is a legal responsibility and a constitutional and moral obligation. At the moment we have an ad hoc arrangement. The duty is not onerous, in that there are 3 Church Council meetings per year and 1 AGM.</p> <p>Several church members will think about it.</p> <p>Appointment to be approved retrospectively at the next Church Council.</p>
Appointment of Pastoral secretary	<p>Di Toole has agreed to take on the role. This is another committee that must have a secretary by Methodist church rules.</p>
Safeguarding	<p>Helen Higginson has Circuit responsibility for Safeguarding and DBS checks. Rev Dawn stressed that the required training must be undertaken in order to fulfil certain church roles.</p> <p>Marcia Lee is StHMC Safeguarding rep.</p>
Reports Finance and Property	<p>Finance. It was noted that a page of the accounts dealing with the church's income and expenditure had been omitted in the booklet of reports. The complete accounts, however, had been presented to Church Council so the relevant page was received by the Chair and uploaded to the church computer screens, The Chair was able to read out certain figures relating to Utilities costs. SdeG to look into the omittance and arrange for copies of the missing page to be printed and circulated, with further queries dealt with at the forthcoming Church Council meeting.</p> <p>Malcolm Salmon gave an update on the Portico- work is due to start by Hartigans on 28th May for 13 weeks. More scaffolding will be erected for decoration of the church frontage before September. Access via the steps into the church may be restricted.</p>
Stewards report	<p>No queries</p>
Other published reports	<p>Nestlings. Lou Hicklin will step aside in June. Present Chairman Jane Pointon thanked Lou Hicklin for all her sterling work in Nestling which has helped to make it a safe and welcoming place. Jane Pointin will step aside in the summer. She appealed for more people to come on committee and also advised that a kitchen assistant job would be advertised shortly. In the short term, someone to help to wash up for 90 minutes a day (between 12 -2 pm) would be very useful.</p>
Items not contained in the reports	<p>Sunday School age-groups. Sally Vassellin spoke of the spread of ages from 4-11 in the younger Sunday school and asked for help with the 9-11year age group, The concern is that they will lose interest if suitable age-related activities are not offered. Some should transition to the Youth Group in September, but the present Youth Group age range is 14+.</p>

	<p>Discussion continued and one comment was that the transition date to Youth Group should be at secondary transfer time in order to sustain the youth group for future years. Therefore, more help would be needed in that group.</p> <p>A comment was made that the Dance Classes should cease in the Youth Room to make it available for our youth and community work. It was asked that this should be minuted. Income for mission versus space for mission.</p> <p>This to be included in next Church Council meeting.</p>
Final hymn	StF To God be the Glory
	Rev Dawn suggested that the length of time set aside by StHMC for the AGM should be longer so the membership could really focus on the life of the church
	Meeting closed at 12 noon.

Annual Church AGM Agenda 10th May 2026

Opening devotions

Apologies

Minutes of the last meeting

Appointment

- Stewards and Officers

Receiving reports

Approving the vision statement and setting mission priorities.

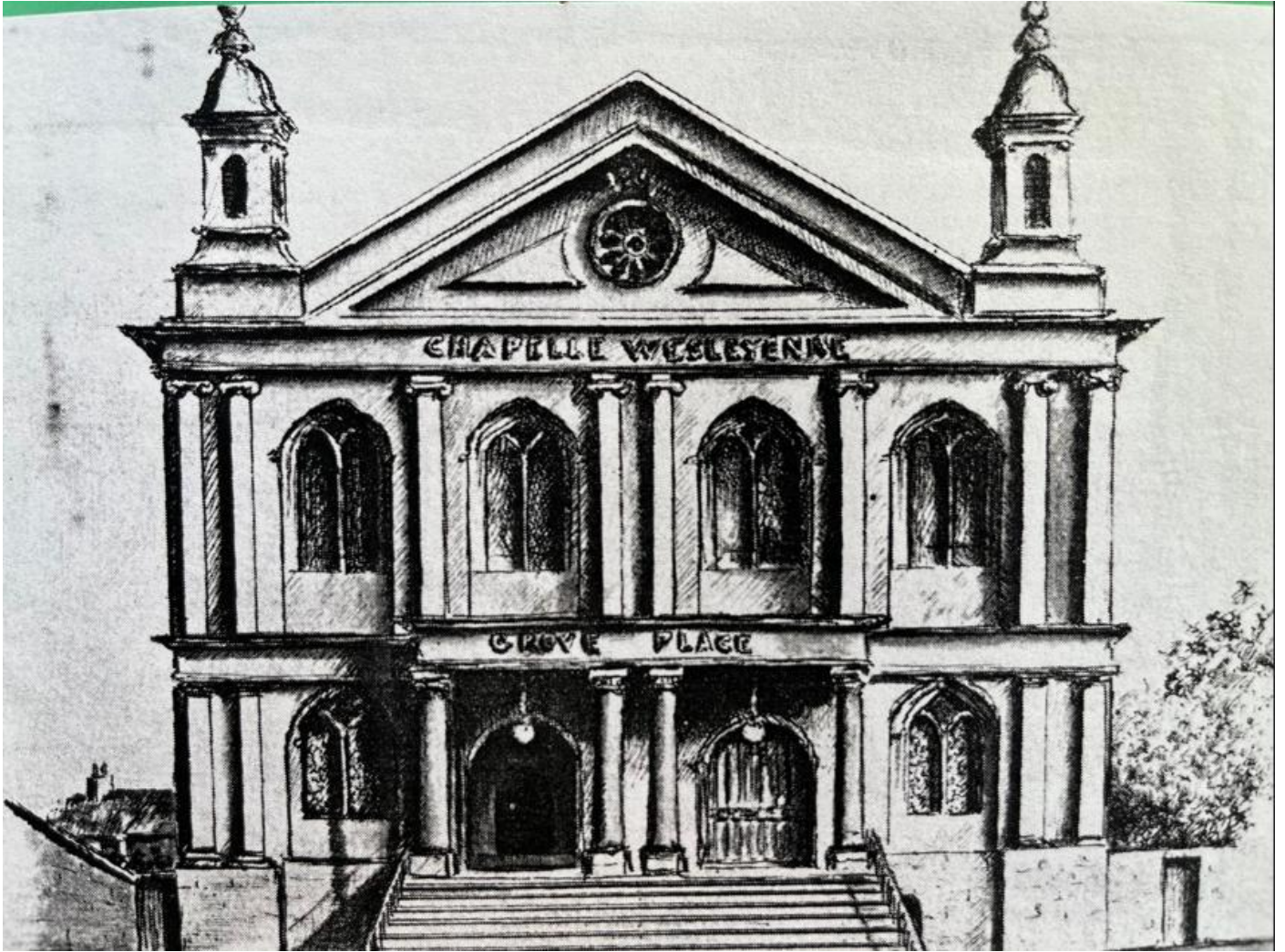
Any other business

Date of the next meeting

Closing prayer







the
Centre
ST HELIER METHODIST