

# St Helier Methodist Centre



## The Methodist Church

### AGM Reports 2025



***‘To make disciples and join in God’s mission  
for change’.***

**All ages, All nations, All stages of faith**

## Minister's Preface

Dear Church Family,

It has been a joy to serve you during my first year in Jersey.

I have learnt so much and have greatly valued working alongside the dedicated volunteers on the management, nursery, pastoral, and steward teams.

A few weeks ago, we launched a pastoral card to raise awareness of the pastoral care needs within our church community. I hope you will find this useful.

Many members of the pastoral care team and the Thursday study group have joined me in visiting the homebound. These joint visits have been particularly special. I am also grateful for all the pastoral care that each member does on behalf of the church. Caring acts make a huge difference to so many who value our presence and prayer.

This is especially true for those who experienced your love and support during the last year of their life. In this AGM we pause to remember those we have lost this year. These include Pam, Gordon, and Enid. We will always cherish them for all they did for the life of the church.

In this letter, I am happy to report that the church council encouraged the congregation to read a book. I am delighted that St. Helier joined Ebenezer, St. Martins, and Georgetown in reading "The 21st Century Christian." I am also encouraged that each church has either found a new group to launch or has implemented some of the book's fundamental principles in existing groups. At St Helier, Sally, Ellen, and Lorraine have introduced opportunities for prayer and discussions about life questions and faith within the young mothers' group on Mondays. They will also expand this outreach to the Wednesday Mums and toddler group in the coming weeks. I eagerly await hearing more testimonies of how the book's insights have begun to impact our churches

Another highlight of the year was the Christmas Carol services. These provided me with wonderful opportunities to share a brief word of encouragement with local schools in St. Helier. Through these carol events, JCP invited me to teach two Year Five groups during Advent and Lent, and the church invited everyone to join a Christingle Service on Christmas Eve.

I have thoroughly enjoyed being a part of the Thursday Bible Study Group. Their insights into scripture and theology make this a highlight of my week. I want to thank them for exploring how the psalm readings could be presented during Lent. I am grateful for their willingness to lead the call to worship during that season and for their assistance in designing the weekly symbols at the cross.

The children and youth have also made every all-age service uplifting and memorable.

Many small groups gathered at the manse for an evening of glass fusing. About 50 people participated in the Friday night workshops, culminating in the big reveal sessions on Sunday evenings during Lent. This was a taster series for something larger that will launch later in the year. The gentle rhythm of welcoming the weekend and praying for the week ahead was lovely to experience during Lent.

A light tree filled with fused glass creations represents the larger community effort of the taster sessions. The tree showcases the beauty and power of working together to create something special. This display will make its way around my section throughout the Great 50 Days of Easter.

Lastly, I want to express my heartfelt gratitude to everyone who has served the church so faithfully this year. St. Helier is uniquely positioned in the town centre and plays a significant part in community life. The centre requires all of us to continue to make it a welcoming church home and outreach for everyone.

Many blessings,

Rev. Keith





## Pastoral Review

Since the last Pastoral Report, we said our “goodbyes” to Tony and his family and welcomed Keith as our new minister.

It must be a very daunting task to get to know people who are potentially strangers, let alone find out where they live!! Keith has managed extremely well to get to know his congregations and is managing to find his way around Jersey.

Keith has encouraged the congregation to let any of the Pastoral Committee or Stewards know if there is anyone in ill health, struggling with personal matters or need praying for, to let them know. This can be done by putting a little note in the collection bag or direct contact.

Sadly, this year we lost three of our most stalwart and faithful members of our church. Pam Marett passed away in January as did Gordon Bullock, also Enid Davis in April.

Pam was an accomplished seamstress, among other things, and made many costumes over the years for the Nativity plays and Battle of Flowers exhibits in which the church took part.

Pam also taught the Junior Church children for many a long year which ran into three generations of children, all of whom had great respect and love for her. Her last official post for the Church was Steward which she thoroughly enjoyed.



Gordon was another stalwart member of the Church who was always ready to help in any way he could. Tony and Gordon were the founder members of "The Garage Club" which was very successful. Gordon helped Tony acquire a Table Tennis table and Gordon supplied the bats and balls, and it all took off from there. He also did numerous repairs for the Nursery (including broken toys) which Hilary would take home for him to fix!! Gordon was also a Steward at one time, a post he also enjoyed.

Enid dedicated many years to helping with the accounts for the Nursery, a job which she was very skilful at. Over the years Enid supported all the social and charity projects the church was involved in and attended the "Young Wives" meetings from almost the beginning.

To each of their families we extend our gratitude and thoughts and prayers. It was a privilege to have known them all.

We hope the prayer cards situated in the Cafe are being helpful and comforting to those who have taken them.

Finally, we welcome anyone who would like to join in our Church Family. The door is always open to everyone.

Val



### Thursday fellowship

Greetings from everyone in the Bible Study group. We continue to meet every Thursday morning during term time at 11am.

Last year we sadly said goodbye to Tony who had led our group, but in September we welcomed Reverend Keith who was very happy to take over the leading of the group.

Approximately 14 people attend the group but there is always room to squeeze in some more if you fancy joining us. All are welcome.

The format has changed slightly. Keith has a book entitled 'A Guide to Prayer for all God's People'. He reads a passage from there and this is linked to a reading from the Bible. It has led to some very deep discussions and testimonies the group can share in a very safe place.

My friends in the group all enjoy the company and fellowship plus the in-depth knowledge that is gleaned each week. Not least the timeline and history of the people of Israel. Something that is very much in the public eye at the moment.

If you enjoy studying the Bible, why not come and join us? We do a one-hour study followed by a bowl of Ellen's delicious soup with french bread, followed by cake yum! You are very welcome.

*Carolyn*





## Children's Ministry

The children's ministry at our church has had an exciting and fruitful year, filled with growth, new connections, and plenty of joyful activities. Our dedicated team has been working hard to provide a welcoming and nurturing environment for children of all ages, and we are thrilled to share the highlights of our work.

### **Weekly Groups**

We continue to run three thriving weekly groups for our youngest members:

1. Baby Group, babies from birth up to 1yr
2. Crawlers Group, babies from 1-2yr olds
3. Toddler Group, over 2yrs

All three groups have been incredibly successful, consistently attracting high numbers of children and their families. Especially the Baby group, when we have had up to 34 babies. Lorraine Wheeler our student Presbyterian has been coming along to get to know the mums, which has been a real blessing.

These sessions are filled with fun, friendship, and foundational faith-based activities that support both the children and their parents.



Ellen has facilitated a group for Twins to meet monthly on a Friday morning. This sprang up from one of our mums who has twins and was looking for somewhere safe and warm for them to meet.

I see the Giraffe group children from the Nursery every week. They are a joy to teach. We sing, dance, play instruments, talk to Mr Bible and have Bible stories.

## Sunday School

Our Sunday School continues to flourish, with numbers steadily increasing. A particularly exciting development has been the formation of a middle group, consisting of about six children of about 9-11yrs old, who are thoroughly enjoying Bible study and growing in their understanding of God's Word. The children's enthusiasm and commitment are truly inspiring! Parents help a great deal with the younger children, but as numbers, and children grow we really need another leader.

This year, the Sunday School children have had the opportunity to participate in a variety of trips, which have been both educational and enjoyable. Notable outings include:

- Love Bird Studio – A creative day where children explored their artistic talents.
- Keith's House – A wonderful experience making glass pendants, giving the children hands-on craft skills and memorable keepsakes.
- Theatre trip - (for the middle group) to watch "Charlie and the Chocolate Factory".

One of the highlights of the year was our Nativity Play, which was a resounding success. The performance saw many children participating, including new families who were warmly welcomed into our church community. It was heartwarming to see so many children and their families come together to celebrate the story of Christ's birth.

Unfortunately, our annual Lorry ride had to be cancelled due to bad weather. Hopefully this year we will make it happen.

We have had a good year and look forward to this continuing into 2025.

*Many Blessings, Ellen and Sally*





## Youth Work

“Our aim as youth leaders is to encourage spiritual growth, community, and leadership among our young people. We strive to help our youth deepen their faith and become active participants in our church family.”

Marcia and I have been running the Sunday youth over the past year. We continue to meet on Sunday mornings down in the youth room to play games, eat cake, chat, as well as explore what the Bible has to say and what living with faith means.

Our youth group has grown slightly in numbers and really good friendships have been formed. Our youth have started to take part in the Sunday Worship on a regular basis, with bible readings and prayers. We also have been making teas and coffees once a month for our congregation and we have just offered to be on welcome duty. We have also walked along to Bean Around the World to get smoothies as a treat!

Once a month we have been meeting for Youth Together, where youth from the circuit are invited to join our youth at SHMC for games, chat, a Faith slot and food.

Just before Christmas the Youth met at SHMC to make Gingerbread Stables, creating angels, donkeys, and mangers made from sweets and biscuits. The Delap family and Marcia spent many hours baking gingerbread and making the stables the evening before, thank you! We all enjoyed bacon sandwiches for breakfast which helped to start the morning off on the right foot.

We recently went up as a group to the Manse, where Keith introduced us to glass making. The evening started off with each of us lighting a candle, then some sharing thanks for the week past and breaking bread together. We had a great time: creating, chatting, eating pizza and enjoying each other's company and being church together.

*Ellen & Marcia*



Another year of growth for Kairos Arts!



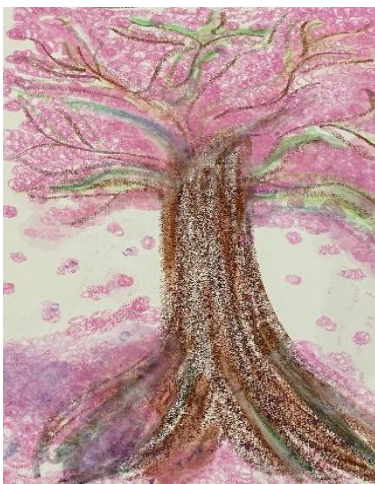
In terms of therapeutic work, we have delivered 6 six-week Therapeutic Arts Programmes for groups, facilitated over 500 one-to-one interventions for children and young people (CYPs), 11 Drop-in sessions for people with lived experience of domestic abuse and sexual violence, and supported the wellbeing of 83 individuals, from Macmillan staff to Chaplains.

### Group Programmes:

We developed a new partnership with Venetia House (run by the Shelter Trust) this year, offering a taster session for staff, followed by a six-week programme for their women residents. By running sessions in their safe house, accessibility issues were removed for those attending. Staff also greatly valued the well-being session we gifted to them.

Wellbeing and self-care was the focus of a six-week programme for 6 Grandvaux school staff following sessions that we were commissioned to run after the school experienced a collective trauma in 2023. The group were grateful for the relief and release this programme gave them and particularly connected using poetry.

Partnership developed with EYECAN, delivering a six-week programme for 4 service users at their centre, and another six-week programme for people affected by domestic abuse and sexual violence, referred by Freeda, Jersey Action Against Rape (JAAR), Community Navigators and Jersey Domestic Abuse Support (JDAS). A strong sense of community was experienced in each, with participants building deep trust and noticing an increase in their sense of self-worth.



We delivered another six-week programme for 7 women supported by Brighter Futures, with creche provisions provided for the duration of the programme at The Bridge. Participants expressed deep gratitude for the inspiration the programme had been to them. Relaxation techniques were discovered and the power of the creative arts to help them process emotions and experiences. We offered training provisions for Brighter Futures staff, a well-being morning for all staff and a parent and child programme was piloted.

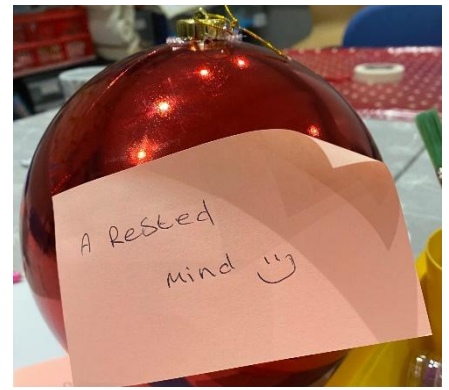


A new partnership led to us facilitating a six-week programme at Grouville Primary School, supporting 6 children.

Then, for those with lived experience of domestic abuse we offered 11 monthly drop-in sessions, with one participant taking up the opportunity to co-facilitate the creation of our public art installation for DA Awareness Week this year...

### Public Art Installation:

This year involved 5 people with lived experience of domestic abuse or sexual violence and was called “Reconnected” – an expression of the participants experience of reconnecting with themselves and the group through therapeutic arts in our monthly Drop-in sessions. It was exhibited for a week in Jaro – a public Art Gallery bringing honour to their work and their voices. We had an opening launch, which Rev Keith Sandow attended along with our Patron, Dr Karen Kyd.



Lou Hicklin, our Products Champion had the support of 21 RBC volunteers over the course of the week!



### One-to-one Interventions:

In this period, 4 Therapeutic Arts Practitioners (TAPs) worked one-to-one with 26 children and young people (CYPs) per term in seven different school settings or at the Jersey Hospice. These over 500 weekly interventions supported diverse emotional and well-being concerns for 10 sessions or multiple terms, depending on need. The impact reports mark important safe-guarding discoveries, fewer emotional outbursts in class, increased confidence and significant improvement in regulation of emotions.



To meet the significant demand and equip others in Jersey to work at this high level therapeutically with CYP, the Kairos Arts one-year Level 6 Diploma saw 15 students pass. This training cohort equipped 3 more Kairos Arts Practitioners in this work, and we employed one other student to join the team. Developing the therapeutic services framework for Kairos Arts is an ongoing focus, increasing regulation and improving impact measurement.



This year we have also developed bespoke trauma-informed and attachment play training for many organisations including Jersey Youth Service, Children and Family Hub, Centrepont and school staff teams.

### **Community Engagement:**

This period has seen increased attendance at the monthly Community Group “Stitch & Natter” at the Salvation Army Café, which invites people to come and help knit, crochet or stitch together pieces to make blankets used in our therapeutic programmes. This community engagement is continuing to meet a social and therapeutic need, across ages and backgrounds, as well as developing our supporter base. We have just taken this into Maison La Corderie!



### **Fundraising:**

To enable the charity’s growth and depth of work this year, funds were raised by dynamic volunteer-led initiatives, flag days, collection boxes, taking stands in the local banks, a Poetry Event and our annual Advent Concert with the Amity Singers at SHMC. We continue to apply for financial support through private donations, corporates, trusts and foundations, and as our work expands, we are so grateful for our regular individual givers – thank you to those at SHMC who support us in this way!

We are also deeply appreciative of the times we can use the Church as a fundraising venue - we love sharing these moments with our Church Family.

So, in conclusion, we thank God for the provision of all our funding and partnerships, but particularly SHMC’s gift of premises and your prayers.

We are excited to see what God has planned for us next!

**Cathy**

## Café

The Café is open Monday to Friday each week. It remains a donations café.

Our aim is to offer the community a friendly, welcoming, warm space.

Monday to Friday tea and coffee is offered by a member of staff to anyone coming in to see us.

Thursdays: The café can have up to 15 people attend for bible study and it's been great to have Rev Keith Sandow join us, to guide our time together. During Lent we have been meeting up in the Church around the Cross to help us stop and reflect. Each week soup is served by Ellen and Maureen after the bible study. This is offered with french stick, followed by cake.

Fridays: Move More Jersey with Mencap continue to use our hall on a Friday. They then come into our café for a hot drink and biscuits, served by Di and Mirto. This is a great success.

### **Hopes for the Future:**

- To open the Café fully in some shape or form.
- For more volunteers to come and help serve tea and coffee during the week.
- For more people to come and use our café area.



*Many Blessings Ellen*

## Management

### **Nursery Flooring Update:**

Permission to share the Nestling Day Care Flooring Survey report was sought from Maillard. Whilst the report from Maillard & Co suggested that the flooring works to the Nursery by Laid Flooring were sub-par, the report did not condemn the work completely.

Management decided to share the Report with Laid flooring for their response and requested that they consider either returning to the site to undertake repairs and remedial work as noted in the Maillard Report or co-sign on a guarantee that they would do restorative work should any issues arise within a certain period.

Management awaits response from Laid Flooring after which they will decide on an appropriate course of action.

### **Pensions**

Pensions all approved by Church council and Rhodrick is due to meet the Lawyers (Paul Matthams) at Seymour LLP who will advise SHMC and Nestling Day care on the matter to ensure there is no Liability accruing to the Employer in the future.

Rhodrick met Paul on 11/03/2024. The meeting went well and Rhodrick needs to send Paul the draft plan documents from Rossborough and some legal documents for SHMC (Incorporation - registered charity organisation under Jersey Law)

Paul reckons this is a pretty simple process as we have chosen a defined contribution plan.

### **Portico**

Internal scaffolding is required, and we were given a tentative start date around mid-April, with the expected completion around August. We are waiting on a start date.

Hartigans are the main contractors, subcontracting to V&B Stonemasons GeoMarine.

### **Church Steps Maintenance:**

The completion of re-pointing the steps was completed in February. The lift-shaft, including possible water ingress, is being monitored.

### **Routine Maintenance:**

Ongoing normal maintenance activities continue between major projects.

**Simba**



## Comments on the Accounts

The Accounts for the Church and Nursery for the year ending 31st August 2024, which are currently with the auditors for independent review, are presented below.

The Church reported a surplus of £99,350 for the year, compared to a budgeted deficit of £ 42,677, a favourable variance of over £142,000. This result was primarily driven by a £117k positive variance in total income, with actual income of £424,671 against a budget of £307,196. A significant element of this was a £87,000 one-off refund from the Pension Fund, recorded under miscellaneous income. Excluding this exceptional item, income was broadly in line with budget.

The most notable income variances were seen in room hire, which exceeded budget by £10,000, reflecting increased use of Church facilities, and donations, which were £19,000 above budget due to strong community and congregational support. Bank deposit interest also performed strongly, coming in £12,000 above budget, driven by higher interest rates and substantial cash balances. These gains helped offset a shortfall of £11,000 in cash collections and covenants and a smaller shortfall in related tax refunds.

Total expenditure was £325,321, which is £24,500 below the budget of £349,873. The most material savings were planned repairs and maintenance, which were £23,000 under budget due to delays in scheduled works and reduced requirements for significant property spending during the year.

Insignificant Underspends across several other operational areas, such as cleaning, printing, and utilities collectively contributed to the overall favourable position but were individually below the £5,000 threshold.

The key areas of overspend included the Circuit Assessment, which was £7,000 above budget. This figure includes the Church's regular quarterly contribution to the wider circuit and its share of the Nursery's surplus, in line with circuit funding arrangements.

In support of Church operations, £90,000 was transferred from the Nursery.

The Nursery delivered a strong and well-managed financial outcome, reporting a net income of £127,938 against a budgeted surplus of £71,599, resulting in a favourable variance of £56,339. This outcome was achieved through consistent operational performance and effective financial oversight. Although fee income was slightly below budget, this was due to the average number of children attending being 44 compared to the budgeted 45, and the Nursery remained at or near capacity for much of the year.

Operating costs were closely managed, with savings across several areas, including property maintenance, cleaning, advertising, and general supplies, contributing significantly to the overall surplus. Interest receivable exceeded budget by £5.8k, reflecting favourable interest rates on cash balances. Staff costs were £45k below budget, primarily due to the Nursery operating with a lower average number of employees throughout the year. This reflects efficient workforce planning despite some fluctuations in staffing levels.

A total of £100,000 was transferred to SHMC reserves, and the Nursery closed the year with a balance carried forward of £27,938. The Nursery's financial management remains strong, and this year's result reflects effective leadership and robust operational oversight.

***Ewa & Rhodrick***

Both the Church and the Nursery performed well in 2024 amid a tough macro-economic environment characterised by above target inflation, high interest rates, and pressure on household income. Congratulations to the Church Council and Management team on yet another satisfactory result!

Many thanks to all Church, Nestling Staff members and Louise who have kept us afloat despite staffing challenges. We have received donations from the church for which we are truly grateful. To the Church membership, thank you for Sunday collections, covenants, volunteering, and prayers. All of which ensure continuity of the Lord's work at St Helier Methodist Centre. Ewa Powierska has hit the ground running following Jackie's departure in March 2024. The Management Committee is grateful for Ewa's excellent maintenance of the Church and Nursery accounts.

*Rhodrick Chatikobo CA(SA), ACA*

ST HELIER METHODIST CENTRE NESTLING DAY CARE CENTRE BALANCE SHEET AS AT 31 AUGUST 2024				
	2024		2023	
	£	£	£	£
Note				
<b>CURRENT ASSETS</b>				
Debtors and prepayments		2,729		1,361
Stock	5	-		-
Cash at bank	7	425,064		374,622
Cash in hand		45		-
		<u>427,838</u>		<u>375,983</u>
<b>LIABILITIES: Amounts due within one year</b>				
Fees received in advance		14,601		14,119
Parents deposit fund	8	12,250		12,250
Sundry creditors and accruals	9	28,901		5,466
		<u>55,752</u>		<u>31,835</u>
<b>NET CURRENT ASSETS</b>		<u><b>372,086</b></u>		<u><b>344,148</b></u>
Represented by:				
<b>UNAPPROPRIATED SURPLUS</b>		<u><b>372,086</b></u>		<u><b>344,148</b></u>

**ST HELIER METHODIST CENTRE**  
**NESTLING DAY CARE CENTRE**  
**INCOME & EXPENDITURE ACCOUNT**  
**FOR THE YEAR ENDED 31 AUGUST 2024**

2024/2025		Note	2024 Actual		2024 Budget		2023 Actual		2023 Budget	
Budget	INCOME		£	£	£	£	£	£	£	£
899,092	Fees receivable	1		871,913		886,971		800,928		740,589
2,800	Interest receivable	2		9,588		2,800		5,021		80
-	Other income (Donation)			1,420		-		45		-
<u>901,892</u>				<u>882,921</u>		<u>889,771</u>		<u>805,994</u>		<u>740,669</u>
	<b>EXPENDITURE</b>									
663,526	Staff costs	3	570,140		615,028		490,921		560,104	
3,200	Training (net of grants received)	3	5,744		3,000		891		3,000	
21,400	Toiletries & Food	4	20,532		20,240		19,008		18,240	
1,300	Art materials		613		1,200		1,123		1,200	
1,900	Equipment repairs & maint.		90		1,800		397		1,800	
99,000	Methodist Church service chg		99,000		99,000		90,000		90,000	
1,900	Rates		1,837		1,800		1,717		1,800	
2,600	Advertising/printing/stationery		962		2,500		1,188		3,500	
525	Telephone & postage		570		504		374		600	
1,700	Bin servicing		1,378		1,600		1,317		1,600	
23,300	Cleaning		17,937		22,000		17,338		22,000	
7,900	Accountancy	6	7,212		7,500		5,391		7,500	
26,400	Property maintenance & repairs		11,671		25,000		18,919		15,000	
11,100	Professional & Subscription fees	10	9,261		10,500		9,261		10,500	
4,200	Sundries		6,011		4,000		4,498		4,000	
2,600	Toys & books & equipment		2,025		2,500		3,173		1,500	
<u>872,551</u>				<u>754,983</u>		<u>818,172</u>		<u>665,516</u>		<u>742,344</u>
<b>29,341</b>	<b>NET INCOME BEFORE GRANTS</b>			<b>127,938</b>		<b>71,599</b>		<b>140,478</b>		<b>(1,675)</b>
<b>29,341</b>	<b>NET INCOME FOR THE YEAR</b>			<b>127,938</b>		<b>71,599</b>		<b>140,478</b>		<b>(1,675)</b>
	Balance brought forward		344,148				233,670			
	Transfer to SHMC Reserves		(100,000)				(30,000)			
	Balance carried forward		<u>372,086</u>				<u>344,148</u>			



ST HELIER METHODIST CENTRE

NESTLING DAY CARE CENTRE

NOTES TO THE ACCOUNTS

FOR THE YEAR ENDED 31 AUGUST 2024

- 1 Fee income is lower than anticipated as the budget was based on 45 children and the Nursery average number of children was 44.
- 2 Interest received from the Central Finance Board amounted to £1,598. The remaining interest was earned locally by placing funds on to fixed and call accounts with Lloyds Bank. Interest rates were much higher than anticipated.
- 3 Staff costs have again been tightly controlled for the year which has resulted in another pleasing reduction in anticipated costs. The Nursery Manager is to be commended for her sterling efforts to control costs in an uncertain climate.
- 4 Food and toiletries expenditure remains tightly controlled and the result is once again pleasing, especially as food costs have risen substantially during the year.
- 5 There were no items of value held in stock at the end of the year.
- 6 Accountancy services were below the budget. Costs included fees of two rather than one finance manager during the handover period. The utilisation of on-line banking continues to prove very cost effective.

7 Cash at bank is made up of:	<b>2024</b>	<b>2023</b>
Central Finance Board monies	32,103	30,505
Lloyds TSB Jersey	392,962	344,117
	-----	-----
	<u>425,064</u>	<u>374,622</u>

- 8 The parent's deposit fund is made up of deposits in the sum of £250 each.

- 9 Creditors and accruals are:

	£
Allowance for staff costs related to Aug	15,671
Allowance for IT IS and Social Security Aug payments	8,240
Allowance for food	2,750
Allowance for accountancy and subscriptions costs	829
Allowance for various cleaning invoices	757
Allowance for plumbing and heating expenses	249
Allowance for printing costs	239
Allowance for petty cash outstanding transfer	100
Allowance for telephone for Aug	48
Allowance for toys purchased but unpaid at year end	18
	-----
	<u>28,901</u>

- 10 The Nursery has agreed a regular payment plan with Law at Work to cover the cost of various personnel and staffing advice and guidance.

**ST HELIER METHODIST CENTRE**  
**BALANCE SHEET**  
**31 AUGUST 2024**

	Note	2024		2023	
CURRENT ASSETS					
		£	£	£	£
Cash at banks	1	53,482		37,375	
Cash at Central Board of Finance		543,578		433,960	
Petty Cash		660		205	
Debtors	2	5,102		12,240	
Prepayments	2	27,290		25,512	
Stock		<u>1,258</u>	631,371	<u>1,537</u>	510,829
CURRENT LIABILITIES					
Creditors	3	33,941		6,697	
Accruals	3	<u>9,049</u>		<u>8,029</u>	
			<u>42,991</u>		<u>14,726</u>
			588,380		496,103
REPRESENTED BY					
General Fund (Unrestricted)			186,137		106,849
Minister's Discretionary Fund			2,910		1,899
General Property Fund (Restricted)			28,867		27,269
In & Out Collections (Restricted)			261		228
Mrs LS Nicolle Endowment Fund (Restricted)			1,326		1,264
Advertising Fund (Restricted)			431		430
Parking Fund (Restricted)			429		429
Peter Luce Legacy Fund (Restricted)			20,000		-
10% Charities Fund (Restricted)			5,418		5,262
Little Rascals Fund (Restricted)			1,000		1,000
Esperado Fund (Restricted)			1,984		2,085
M Tourtel Memorial Fund (Restricted)			6,497		6,268
Daryl De Gruchy Legacy	4		333,120		343,120
TOTAL CHURCH FUNDS			<u>588,380</u>		<u>496,103</u>

**ST HELIER METHODIST CENTRE  
OTHER FUNDS - 31 AUGUST 2024**

In & Out Collections		£	General Property Fund		£
	<b>Balance b/f</b>	<b>228</b>		<b>Balance b/f</b>	<b>27,269</b>
	Various receipts	3,440		Tf to inc/exp	1,599
	Less paid to:		<b>31.8.24</b>	<b>Closing balance</b>	<b>28,868</b>
	Cafe for Jersey Cheshire homes	353			
	Dementia Jersey cafe	203	<b>Parking Fund</b>		<b>£</b>
	Donation for toys at Christmas	200		<b>Balance b/f</b>	<b>429</b>
	Christmas eve & Christmas day / Actio	232		No movement in period	
	Brightly Jersey	149	<b>31.8.24</b>	<b>Closing balance</b>	<b>429</b>
	Beetle Drive Kairos donation	250			
	Kairos cafe	231	<b>Mrs LS Nicolle Endowment Fund</b>		<b>£</b>
	Jersey Cares charity	206		<b>Balance b/f</b>	<b>1,264</b>
	Jersey Cares	300		No movement in period	-
	Christian Aid	1,283	<b>31.8.24</b>	<b>Closing balance</b>	<b>1,264</b>
<b>31.8.24</b>	<b>Closing balance</b>	<b>261</b>			
<b>10% Charities Fund</b>		<b>£</b>	<b>Minister's Discretionary Fund</b>		<b>£</b>
	<b>Balance b/f</b>	<b>5,261</b>		<b>Balance b/f</b>	<b>1,899</b>
	Transfer from General Fund	5,367		Add food bank donations	2,709
	Less paid to:			Less rent assistance and other e	248
	Food vouchers	896		Tf to 10% fund for vouchers	1,450
	Action Aid	180	<b>31.8.24</b>	<b>Closing balance</b>	<b>2,910</b>
	Christmas meal	76			
	Children in need Nursery fundraising	28	<b>Advertising Fund</b>		<b>£</b>
	Christians Together	50		<b>Balance b/f</b>	<b>430</b>
	Save the children charity	38		No movement in period	-
	Jersey Child Care Trust	61	<b>31.8.24</b>	<b>Closing balance</b>	<b>430</b>
	Watoto funding	552			
	Easter Offering	125	<b>Little Rascals Fund</b>		<b>£</b>
	Kairos Bolivia Mission trip	3,111		<b>Balance b/f</b>	<b>1,000</b>
	Nursery Easter party fund raiser	22		Add net income	1,247
	Nursery fun raising	70		Less expenses	738
<b>31.8.24</b>	<b>Closing balance</b>	<b>5,418</b>	<b>31.8.24</b>	Less transfer to General Fund	509
				<b>Closing balance</b>	<b>1,000</b>
<b>Daryl De Gruchy Legacy</b>		<b>£</b>	<b>Michael Tourtel Memorial Fund</b>		<b>£</b>
	<b>Balance b/f</b>	<b>343,120</b>		<b>Balance b/f</b>	<b>6,268</b>
	Less paid for:			Add bank interest received	399
	Sat7 Charity	10,000		Less Youth Zoo visit	170
<b>31.8.24</b>	<b>Closing balance</b>	<b>333,120</b>	<b>31.8.24</b>	<b>Closing balance</b>	<b>6,497</b>
<b>Peter Luce Legacy Fund</b>		<b>£</b>	<b>Esperado Fund</b>		<b>£</b>
	Opening balance	-		<b>Balance b/f</b>	<b>2,085</b>
	Peter Luce Fund	20,000		Cake and Book sales	499
<b>31.8.24</b>	<b>Closing balance</b>	<b>20,000</b>		Less:	
			<b>31.8.24</b>	Tf to Esperado project	600
				<b>Closing balance</b>	<b>1,984</b>



**ST HELIER METHODIST CENTRE**  
**NOTES TO THE ACCOUNTS**  
**31 AUGUST 2024**

1	We continue to maintain a balance of cash in Jersey (and now mainly use Lloyds Bank) to cover general running costs. The Central Board of Finance offer better interest rates on cash deposits and so the majority of funds are held there.	
2	Debtors and prepayments are:	£
	Methodist Circuit assessment fees	20,106
	Methodist Church Insurance (7 m)	6,123
	GST recoverable	5,002
	CCLI Licence (11m)	547
	Alpha Print yearbook	250
	Web hosting fee (9m)	210
	Petty cash owed and other debtors	154
		<u>32,392</u>
3	Creditors and accruals are:	£
	Circuit share of Nursery profits	31,984
	IT IS and Social Security Contributions Aug invoices	1,957
		<u>33,941</u>
4	The Daryl De Gruchy Legacy Fund is being used for specific one-off projects/expenses and its use is controlled by the Stewards.	
5	Room hire receipts were pleasing during the period and we remain very grateful to the Street Dance Team for their continued support. We are fortunate to have also other organisations using the centre which is resulting in much improved income.	
6	Donations include £20,000 received to create the Peter Luce Legacy Fund.	
7	Bank deposit receipts were pleasing and interest rates are currently much higher than they have been for some time. The current higher than budgeted rates are welcome.	
8	Miscellaneous income (over £100) include:	£
	Nursery 2023 profits	100,000
	Pension Fund Refund	86,847
	Tf from Rascals fund and other income	510
		<u>187,357</u>
9	Circuit Assessment fees include quarterly fees and share of Nursery profits.	
10	Staff costs are higher and include annual increase and staff overtime.	
11	The total repairs and maintenance costs include £15,736 in respect of repairs to the Hartigan - Portico, and a transfer of £1,599 to the General Property Fund.	
12	Miscellaneous expenses (over £100) include:	£
	Christmas expenses	668
	Crosses ordered Christian shop and St Martin	559
	Fire certificate renewal	430
	Collect Tin equipment	369
	Church flowers and garden expenses	347
	First Aid Kits	279
	AGM report and 2024/25 year books	209
	Web hosting & domain renewal	206
	G4S Security	165
	Café supplies	163
	Rented Dwelling licences flat 1 & 2	120
	Miscellaneous expenses under £100	1,106
		<u>4,621</u>

## Office

Well, another year has passed, and I am not quite sure where the time is going. As many have already mentioned in their reports, we had to say our goodbyes to Tony and his family last year, it was a pleasure working with Tony albeit only a short time for me. It was great to meet Keith in September and I am looking forward to working with Keith.

The long-term letting from Move More Jersey for Jersey Mencap has continued again this year. They are a pleasure to have on a Friday morning and bring a real buzz to the centre. They play a game called Boccia, a similar game to bowls, and at times you can hear they get rather competitive. They then have teas and coffees in the café which Di and Mirto cater for, thank you Di and Mirto for your ongoing help. On a very rare occasion when Di & Mirto are not able to make the Friday mornings, I step in to serve teas & coffees, although those attending are a little disappointed with my selection of bikkies

All other long-term lettings remain unchanged.

- Emma-Jane Dance Academy
- AA,
- Backbeat
- Street Pastors
- Kairos in Ruby Ferguson House

We continue to get phone calls or emails requesting new long-term lettings, however due to the current schedule we don't have any availability.

Events being held in the Church this year are for Music in Action, Jersey Festival Choir, Arthouse Musical, the JCG Leavers service and several bookings for Christmas services.

Foodbank work continues, with all referrals coming from Citizens Advice, we also continue to support families from one of the local primary schools. The numbers dropped during 2024 compared to 2023, seeing 30% less people, with speaking to CAB, they advised that they had also seen a drop in people requesting help.

I would like to take this opportunity to thank everyone including those from other Churches within the Circuit who make donations.

Looking forward to the year ahead.

*Julie*



## Stewards

Sue de Gruchy and Libby Farnon are the joint senior stewards for 2024-25 with Martin Delap, Lou Hicklin and Rodney Mutenure on the team. Francis Quansah and Ajay Bherwani will step down this year. We welcome any new people into our group so please have a discussion with Rev Keith or one of the stewards if you are interested.

We said goodbye to **Tony and family** at a special Circuit service in July as Tony continues his ministry in Halifax. Before departing, Tony arranged for some of the church family to visit **William Smith's grave in Almorah Cemetery** with flowers from the church. William Smith was instrumental in the discussions to set up Jersey College for Girls to provide private education for girls in Jersey.

At the beginning of September, we welcomed Rev **Keith Sandow** (and Beau) to the Circuit and celebrated **Harvest Festival** with him on 22nd September. Contributions were asked for the Foodbank, and fresh flowers were delivered to our members who can't join us on Sundays.

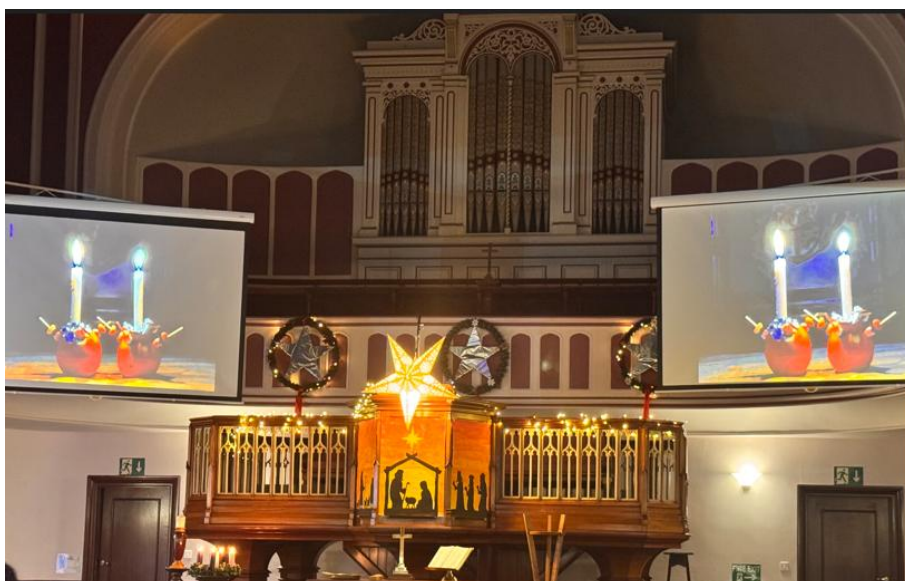
Ongoing **joint steward meetings**, started in Autumn with Ebenezer, Georgetown and St Martin's, have helped in the decision-making for the circuit plan and it is refreshing to reflect on how well we work together with good grace and goodwill.

The Steward team has updated the **Fire procedures** and delivered a Fire Drill awareness session at the end of a Sunday service in September to explain the procedure to the congregation, including a reminder of all the fire exits from the church itself and the ground floor rooms.

Because of ongoing concerns about the use of the building by outside groups for concerts etc, we have worked with Julie (our Office manager) to create **volunteer steward guidelines** and update the present **conditions of hire**.

**Charity giving.** At Christmastime, the stewards decided to donate £500 to **Sat-7** and £500 to "**All We Can**" and offer our youth group £500 to **dispense to a charity/ies of their choice**. We continue to welcome representatives from Sat-7 (a charity the church supports) about the work they are doing in the Middle East and N. Africa.

**Esperado** sales continue throughout the years through the efforts of Jane and Trevor Pointon and team of friends. Our commitment to the charity is £50 monthly, which the tabletop sales manage to achieve.





St HMC continue to support the **sectional prayer cards** that are specific to our day-to-day lives in the island. Thanks to Lou Hicklin for designing both words and images for the winter quarter and arranging for printing and distribution. However, the Stewards are reminded not to carry on with these cards in the light of our own excellent Prayer Handbooks and the display selection for prayer cards for different prayer needs in the café area.

We also thank Lou most gratefully for sorting and tidying the **Foodbank vestry** and the **little Chapel** which is now once again a calm space for private reflection and prayer. Lou also served hot chocolate to those who use our steps for their lunches during the week- weather-permitting! Certainly, an idea to follow up.

**Christmas decorations.** The interior of the church was a blaze of light for Christmas with every windowsill displaying a Christmas tree decorated with a different theme chosen by church groups and individuals. Our thanks to all involved and especially to Sally and David Vasselin who procured and installed the trees. They were a real hit!

**Advent and Christmas** were busy times for our church. Five schools used our premises for their own Christmas Celebrations. At a rough count, some 2000+ children and parents crossed our threshold. It would be interesting to think of ways to encourage them back before next Christmas.

We enjoyed the **Advent concert** given by Cathy Sara and Amity to raise much-needed funds for Kairos.

**De Gruchy's Funeral Service** held their annual service of Remembrance in early December.

**Advent and Christmas services** included a joint "Deck the Halls" service at Ebenezer, led by Rev Keith, where the backgrounds to many of our favourite Christmas traditions were explored.

**St HMC Carol Service** was well-attended, and compliments were paid to the Christmas choir and Christmas brass group whose contributions enhanced the service. The Youth group was allocated many of the readings and we were delighted to hear young new voices reading the old familiar story.

Rev Keith displayed his skills in **glassmaking** and created some beautiful terrariums with the youth groups across the eastern section churches. You can admire St HMC's in the Vestibule or sometimes at the front of the church on the flower display stand.

Sally, Ellen and the young people staged a thoughtful **Nativity** and, with Rev Keith, organised a **Christingle** service on Christmas Eve where some 40 people came to create their orange lights and join together in a different kind of Christmas reflection. All these events in December were threaded through with our own church Sunday services, as well as extra external concerts put on by Music in Action. It is a credit to Julie, Keith, the audio-visual team, the coffee rota team, the flower ladies and church stewards that everything went smoothly, was well-organised and that re-organising the church ready for the next day went so smoothly.

In the new quarter of 2025 St HMC will be at the heart of celebrations for the **250<sup>th</sup> Anniversary of Methodism in Jersey**, with visits from the President and Vice President of Conference on **Sunday 27th April**, and we thank Libby for her organisation of a circuit choir who have already begun rehearsals.

Two "**Alive and Well**" meetings that identify local church needs have been attended by many island stewards, and we have proposed the idea of a Youth worker which the Circuit is considering. As Rev Dawn is moving back to the UK in 2026, a new Island profile is being shaped to discern how to best minister to the island both spiritually and pastorally in future years. The closure of certain buildings

has not been ruled out, although StHMC continues to have an essential role in youth ministry, and outreach in St Helier.

StHMC has been encouraged by Rev Keith to read the book **“The C21st Christian”** which will lead us to consider how to seed new community groups and to show by example the love of God.

The stewards have requested Circuit and committee minutes from all established StHMC committees in order to deepen and develop communication. A steward rep. will attend other committees’ meetings where possible.

The Stewards are aware that **25<sup>th</sup> Anniversary celebrations** linked with the amalgamation of Aquila Road and Wesley Grove churches should go ahead in September. We look forward to sharing the celebrations with Mark and Ros Haynes.

*Sue de Gruchy and Libby Farnon, Senior stewards*



## Nestling Nursery

2024 continued to be a challenging year in the nursery due to recruiting good, qualified staff as recruitment is at an all-time low on the island.

We had our annual review from our regulators from Children and Early Years Services (CEYS) and we had a very positive report indicating that Management and staff work incredibly hard to ensure all children in the setting are happy, healthy and continue to thrive as confident, lifelong learners.

We had a follow up moderation review which focuses on our provision, resources and practices especially for the children who are receiving Nursery Education Fund (NEF). The moderation officer gave a very positive report and said that Nestling was one of the best nursery provisions on the island. This was a real credit to all the staff as we have all worked incredibly hard to maintain the highest standards of early childhood education and care for all the children to have the very best outcomes.

All staff continue to excel in their continuous professional development, all mandatory training was completed, and staff really went that extra mile to give up their time to attend in house training to keep relevant in their practices.



We have maintained good working partnerships with all the parents to ensure the continuity for all the children attending the setting. Parents are invited into the nursery throughout the year to join in with their child play, speak to their child's key worker and to celebrate special occasions.

One of the areas which needed improvement was the outside area and it was an ongoing task for us. The area was freshly painted which made a huge difference and more inviting for the children and is now a continuous provision which offers challenge and development in all areas of children's learning.

We raised an incredible £265 which the church matched to make a grand total of £530 in aid of the Jersey Child Care Trust who support families and children on the island

The nursery committee meet often to support the nursery manager and the staff on all nursery matters which is very welcoming and continues the connection and relationship between church and nursery.

***Louise Jones-Butel, Nursery Manager***



**Minutes of St Helier Methodist Centre Annual General Meeting and Communion held on Sunday 12th May 2024 10.30am**

<b>Welcome &amp; Devotions</b>	These were led by Rev Tony Morling offering praise and thanksgiving to our Lord Jesus Christ.
<b>Song</b>	I will enter His gates with Thanksgiving.
<b>Attendance</b>	70 Members and children were in attendance.
<b>Minutes</b>	Minutes of the AGM of May 14th, 2023, were approved and signed as an accurate record.
<b>Prayers of Praise from Liturgy for Pentecost: MWB 174</b>	Faithful God, you fulfilled the promise of Easter by sending your Holy Spirit and opening the way of eternal life to all the human race. Keep us in the unity of your Spirit, that every tongue may tell of your glory; through Jesus Christ our Lord, who is alive and reigns with you, in the unity of the Holy Spirit one God, now and forever. Amen.
<b>Promotions to glory</b>	Thanks to God for Pat Tourtel and Peter Luce for all they have brought to our Church over many years. Prayers were offered to Pat and Peter's family, Sally & Mary, and Gill.
<b>Appointments of Stewards and reps to Church Council</b>	<p>Church Stewards (including election and thanks) Val Macdonald has stepped down after six years exemplary service and received gifts and flowers as thanks for all her work.</p> <p>Val related her experiences of being a steward, said a few words on how being a steward had helped her grow in her faith and in her love for Jesus. She had enjoyed the close teamwork and love, camaraderie between stewards and the opportunity to serve within the church.</p> <p>Re-elected stewards were Libby Farnon, Sue de Gruchy, Francis Quansah, Ajay Bherwani, Martin Delap, Lou Hicklin. Newly elected Rodney Mutenure. All members were in agreement and voted accordingly.</p> <p>Elected reps to Church Council: David Hicklin, Jan &amp; Martin Le Boutillier, Maureen Rayson, Di Toole and David Vasselin. This was voted unanimously by church members.</p> <p>Printed reports were distributed two weeks before the AGM in order that all had an opportunity to familiarise themselves with the content. Thanks were expressed to all who were responsible for submitting a report and the meeting unanimously received the reports as presented.</p>
<b>Items not included in the written reports that we don't want to forget!</b>	Support for Bible Society, Tony's 'Rivers' sabbatical, people who water the plants, flower arrangers, coffee and tea makers, the garden outside tended by Michael, rotas flowers, coffees, stewards, communion setters and Audrey for the organ. The continued ministry of Cathy and Tony over the last 11 years, the team who cleaned the windows. Jean, Sue and team who put together themes and decorations for harvest, Christmas etc, 10% funding for mission work, Sat 7 support, piano players. Esperado.

<b>Financial Overview (Including Nursery accounts)</b>	<p>The Financial report was accepted and unanimously agreed. Proposed Di and Tony Hefford seconded</p> <p>Julie took over from Sarah and had proved a great asset. Thank you to Jacquie Ollerenshaw for all her hard work over the years, Ewa has now replaced her and settled into the job.</p>
<b>Nursery Accounts</b>	<p>Lou reported that Nursery Account showed an increase in toiletries and food due to cost of living and food.</p> <p>Toys and books although increased in 2023 and may not be enough for 2024 to supply the nursery.</p>
<b>Gospel</b>	<p>Matthew 28 16-20 “Go into all the world”</p> <p>We remembered the influence of William Smith, an advocate of female education, who had profoundly enriched this Island.</p>
<b>Minister's Comments</b>	<p>“I am with you to the end of the age”</p> <p>Continue to make the centrality of Jesus to be the focus of our common life with Jesus in the name of the Father, Son and Holy Spirit never to forget.</p> <p>We don't know what the future holds. Our new minister Keith is engaged in bringing renewal within his Circuit and the meeting prayed for him as he prepared to travel to jersey in August.</p>
<b>Hymn 571</b>	“As your family Lord, see us here”
<b>Communion</b>	Was given and children and Youth returned.
<b>Hymn 663</b>	Offertory was taken during “I, the Lord of sea and sky”
<b>Blessing</b>	

Opening devotions

Apologies

Minutes from the last AGM

Matters arriving

Appointments

- Stewards

Reports

- Management including finance
- Stewards
- Nestlings
- Children and youth
- Ministers report

Mission and ministry

Remembering those who have died in the year.

Date of the next AGM





