

# The **Methodist** Church

## **AGM Reports SHMC 2017**



**All ages, All nations, All stages of faith**





### **Minister's Preface**

These reports attempt to tell the story of our church's activities over the last year. I say "attempt", because it is not easy to capture all that goes on. With hundreds of people using our premises every week and large community engagement it is inevitable that much will be left unsaid.

I hope that they convey our "love for God and love for neighbour" and the theme of mission is close to the surface. These are exciting times and it is wonderful to sense the Spirit's work among us. Over the past year there have been developments. We have seen new people arrive and joyfully been enriched by members of the world church. Our financial situation is much more stable and we see new areas of church life like Toddler Church flourishing. Praise God!

The reports also imply the tremendous dedication of time and energy of many. With the stewards, and all those that serve, we are blessed to have a wonderful staff team of Sarah, Sally, Ellen, Jackie, Annie and Teresa who serve this church with great commitment.

Together, we are the "body of Christ" with each part contributing to the good of the whole. So, thank you for your distinctive contributions to God's mission.

Church Council has wrestled with a simple question: "Can we state what Christ is calling us to do?" A great list of activities was soon identified! But we kept asking, "What is the key component of our calling? Is there a plumb line against which we can measure all activities?" After a great deal of thinking, praying and conversation we found turned to Jesus' words in Matthew 28: 19 *"Go and make disciples of all nations..."*

As John Wesley was driven to fulfil Jesus' commission *"to go and make disciples of all nations..."*, so we concluded that SHMC's primary focus must also be to share the gospel. The word "make" could imply unsympathetic force. But we concluded that to follow the pattern of Christ, the making of disciples must always follow the way of love and grace. We also concluded that the making of disciples was primarily a challenge to ourselves to be more committed followers of Christ!

There was a strong consensus that the Spirit was also calling us to get involved in radical change: challenging injustice, creating relationships of trust and working for peace. So, we included the words: "Join in God's Mission for Change". After much healthy conversation, it was agreed that St Helier Methodist's Centre's primary calling is:

## TO MAKE DISCIPLES AND JOIN IN GOD'S MISSION FOR CHANGE.

In addition, over the next year SHMC will focus on five areas of mission:

Discipleship Course and Pathway	men's ministry, courses and more home group engagement
New Song	a new pattern of worship outside of Sunday 10.30am
Greater Participation in Worship	release more people's gifts in worship
Introduction of Talitha Jersey Hub	to bring restoration and hope through the creative arts
Research Social Exclusion in Jersey	act to bring real change to those in need

In twelve months, there will be the opportunity to measure what progress we have made. No doubt we will have achieved more with some than others. Perhaps new developments will have started that will surprise us! But I do sense that a stated focus helps us to journey forward with confidence.

Finally, I offer our sincere thanks to all those who have submitted reports and to Sarah for collating and publishing them. I encourage each one to play their part to the full, and collectively seek the empowerment of the Holy Spirit as we go forward in faith.

Yours in Christ

Tony



## **Stewards' Report 2017**

We now have six stewards on our team, Pam Marett, Ann Paul, Kay Papworth, David Hicklin, myself, and our newest member Simba. We think of Simba and Tariro at this very sad time, of the loss of his mother. Please keep them both in your prayers during the coming weeks. It has been a great privilege to work with such a dedicated group. The way in which they have contributed in the varied and difficult tasks has been a blessing to all on our team, and to the wider Church family. We meet with Tony monthly where we discuss the past month's events, and arrange anything for the next month, and further ahead. If there is anything that you would like to bring to any of our meetings we usually meet on the 2<sup>nd</sup> Monday of each month so don't hesitate to contact one of us.

The Sound and Vision team is slowly expanding with 2 new recruits; Jan Le Boutillier, and Arthur Kembo. We do greatly value their input but there are always space for more people to get involved, so if you feel that this is something that you could help with, don't be shy - come and talk to us. (Training will be given!)

Prayer Ministry is held once a month on a Saturday morning between 10am-12 pm. Prayer is very important in our Christian walk with Jesus; we would love to see you there, speak to David H for more details.

It would be wonderful if the Prayers of Intercession could be shared and sometimes led by others, again, please come forward if you feel that this could be something that you would like to do. The more people get involved the better for all.

Our Food Bank is now a very vital part of SHMC - this is a lifeline to many people in need. Any donations of food or money will be very warmly received. The work involved with the Food Bank is a great deal more than we might imagine. We are so grateful to Sarah for the love and kindness she gives to it. Sarah does an extremely good job in the office with everything she does - we are so fortunate to have her.

I am finding the Yearbook/Prayer Diary very useful. It is a great comfort to know that we can pray for all our church family every month. This is important; I do hope you have your copy.

Spring and summer are on the way, so we will be having Visitors to the Island, some hopefully wanting to visit our church. We need to have the Church open, so volunteers are required to welcome people into our building. If you have a spare hour in the week this is maybe where you can help. Please see any of the Stewards.

During the year, we allow the AA to use our Youth Room for meetings. In July, they had a special Presentation which they invited some of us to attend. We heard some sad stories of how people had fallen on hard times, but are now coming through with the help of the AA.

Tariro, Simba's wife, and Verna have now joined the Communion Steward team.

We now have a Men's Group, calling ourselves "G n T", Grace and Truth. We meet on the last Monday of every month for Bible Study and Games. There are about 12/13 of us most times. This is an opportunity to get to know each other and share. If you have not been part of this group and would like to come along please see Tony or me, we would be delighted to welcome you.

Last October at St Martin's Chapel and again in March at Bethesda our Church family met up for a day of fellowship, food and fun. These Away Days are just times when we can relax and be together with no pressure to do anything particular. Brian and Becky Purchase led the last one. Our thanks to them for their time and teaching.

Ben Devoid will be here in Jersey on the 13<sup>th</sup> July. His first service will be on the 16<sup>th</sup> July. It was suggested that it would be a good idea to have a Circuit service to introduce him to the Circuit.



Our new Ministers coming in September to the Circuit are Rev Nico Hilmy- Jones and Rev Jenny Pathmarajah. There will be services of welcome for them. Please try and attend.

Car parking is still a problem please pray that we can come to some arrangement to help this longstanding issue.

A big Well Done to Jane and Trevor and their helpers for organising the Esperado Table Top Sale on the 1<sup>st</sup> of April. A superb total of £500 plus was raised well done to all.

On the 21<sup>st</sup> April at 7pm the Watoto Children's Choir from Uganda sang in our Church. They were well worth seeing.

---

*Mark 14 v 8 She has done what she could, Jesus requires us to do what we can too.*

*1 Peter 4v10 Each of you should use whatever Gift you have received to serve others.*

David V.      Senior Steward



### **News from the Past Year - Pastoral Review April 2016/2017**

Looking back on last year's Review, I think I can say that we have continued to make progress in many areas, with a growing number attending church and feeling part of our community.

We are now very fortunate in having Ellen as a family worker to support Sally in the Children's Ministry and Annie in the café where parents and carers take the opportunity to stay for a while to share their concerns, with the staff and each other.

As a Pastoral Committee, we meet quarterly where we have been delighted to take up Allison Gregory's offer to become a Pastoral Group Leader. Allison has been given a group of some of our most recently transferred members – some of whom will also maintain membership in their home churches, but it was felt that while they are living in Jersey we recognise that SHMC is their spiritual home. Ellen Davey and Jan Woods were confirmed and those welcomed into joint membership were Simba and Tariro Mashiri, Willard and Vernah Muvengerwi, Michelynne Bassue, Sami and Cecilia Fisilau, Arthur Kembo and George Oppong.

At the Confirmation Service, it was also a joy to witness the Baptism of Jan Woods, mother of Emma Gamble. Jan has become part of the fellowship of the church enjoying the House Group as well as helping with Messy Church, and taking part in other activities, such as knitting angels, and colouring butterflies.



We begin our Pastoral Committee Meetings with a time of study and discussion led by Tony, looking at the various aspects of Pastoral Care – Prayer and Healing, Active Listening, - which we have found very useful.

#### News of members:

We were sad to record the death of Margaret Le Herissier on 25<sup>th</sup> February. Margaret would have celebrated her 93<sup>rd</sup> birthday on the 13<sup>th</sup> March, and had been an active member of Wesley Grove since she moved into town from St. Mary. She could be seen striding along with the help of her elbow-crutches, shopping bags swinging from both sides in the early days of our churches joining together in 2000 but for the past few years had not been well enough to come. She was always interested to hear news of the church and was regularly visited. Some of us attended the Service of Celebration at St. Mary's church, which was conducted by Tony. Our sympathy and love go out to her daughter Cynthia.

Our love and prayers also are extended to Simba Mashiri, whose mother died recently.

Another death which caused sadness in our community was that of John McCarthy. John lived opposite the church in Vauxhall Gardens and was well known to the staff in the café, as he would come in regularly for his morning coffee, and also for meals. He was well known in the community and spoken of with affection. His funeral service was held at our church on 17<sup>th</sup> November led by Tony where Gerry Padden, and Vini Jones of the Grace Trust, and one of the leaders of Social Services paid tributes to him. The church was well filled with those who had held him dearly in their hearts. In addition, Tony has offered bereavement support to many throughout the year when he has conducted funerals at the crematorium for people who are not connected with SHMC but request the presence of a Methodist Minister.

Eunice Le Breton celebrated her 100<sup>th</sup> Birthday on 12<sup>th</sup> January surrounded by her family and friends and flowers, with the usual message from the Queen brought to her by our Bailiff. Eunice still enjoys life having moved to the Little Sisters, always looking on the bright side with a cheery smile, and amazes everyone who visits her.

On the opposite end of the age line, we were happy to welcome Amelie Iris Shaw, daughter of Dominic & Verity Shaw, grand-daughter of Sally, to her Service of Baptism on 5<sup>th</sup> March. It was a very lively Service accompanied by a band and singing group, during the sermon a thunderstorm, and a dramatic reading all adding to the celebration. Also baptised on 4<sup>th</sup> September last year was Joshua Le Masurier, son of Peter and Annejoy, brother of Rubie.

Some of our members have suffered poor health this year. John & Joan Johnson have both been unable to come to church for various reasons and we send our love hoping that they will soon be fit and well enough to join us again. Kath Le Gallais has felt unable to make the journey to church, even though she is grateful to those who have been kind enough to offer to fetch her. We send our love and want her to know that we remember her in our prayers. There are others who have had long periods of illness over the winter, whom we remember in our prayers and hope that now the sun is shining we shall see them again. We also remember Lynn Davis Groothuizen who has been diagnosed with rheumatoid arthritis, as she comes to term with this, helped by medication and Joyce Luce, aunt of Tony, who at 95, is not able to attend church but is always cheerful and bright.

During the year, we held two Away Days, one in November at St. Martin's Church and one in March at Bethesda. Both were appreciated and enjoyed and those who attended found them encouraging and beneficial.

Some of us, together with members of the Circuit, have enjoyed and benefited from Cathy's quarterly sessions of Recharge. We always come away renewed, recharged and with something to reflect upon.

Our weekly Communion Services provide a source of spiritual nourishment, strength and encouragement to those who attend. We meet at 12 noon each Wednesday for prayer, followed by a short Bible study leading into the Communion. Some of us then take the opportunity of having lunch downstairs in the café.

We like to think of our church as a family, 'a place of belonging – a purpose for life' – as it states on the front of our Year Book and Prayer Diary. This is a valuable asset to our church life, where all are welcome – all ages, all stages, all nations – and if you look on the back page at the list of Activities we hope you will find something which is just for you.

Pat





## **Reflections on the Past Year Children's Work 2017**

Our work here at the Centre with families and children continues to be busy. Most of our groups are the same as previous years, but we have noticed that the attendance in the Toddler Groups is significantly higher.

Since writing last year, Ellen has been appointed to help with the Children's work, and the work in the Café. She is a great blessing to the Centre and also a lovely friend. She gets on well with the families and is a good worker. In fact, I don't know how I managed without her. As you have noticed we now occupy the middle room upstairs. So not only are all our resources there but very often that's where we may be hiding!



Our Toddler Church that was new last year has had its 1<sup>st</sup> birthday. Although smaller in numbers than the other groups, it is just beautiful. The families that attend come because they are made to feel special, and because they want to know how to introduce God into their children's lives. It is such a privilege to be able to start them on that journey.

Tuesday Rascals group is so popular that sometimes it is too busy. As with all groups numbers fluctuate but we are seeing over 40 children, and their parents each week. Not always the same families, but many regulars. It is a lively, happy, busy, group, and obviously so much needed in our neighbourhood. Some of these families are overlapping into Toddler Church, and a few come to Messy Church, and one little family now come to Sunday Church.

Wednesday Lunchtimes has also become popular again, after a dip last year. This is great for the Café, and another point of contact for us, as many will have been on Tuesday as well.

Our Messy Church continues on the 3<sup>rd</sup> Thursday of each month. Sometimes numbers have been lower than expected, but we have a dedicated team of helpers who make it happen and we always have a great time together exploring different Bible stories. Thank you to everyone who helps in whatever way at Messy Church, we cannot do it without you.

Last year in the summer we tried a different style of Holiday club. We invited families to come to enjoy spending time together. It was aimed at the younger children, but older ones could also get much from it. We held it mostly in the Church, which we had arranged very differently, and went down into the hall only to do very messy things. It started very slowly at the beginning of the week, but on the Thursday when somehow people got to know, we had a Bouncy castle, it was just over-run. We have big thinking to do about how we would manage another such event. But we will do. Because "families", is where we need to make more of our focus. Children won't come to Church, or Church events without the support of a parent.

Our annual Lorry ride outing in the summer went very well again. The weather and the tide were also just right and many of our dear older folk joined with us too. This is so popular that this year's is already booked for the 16<sup>th</sup> July.





Lots of knitted Angels flew around the Island the week end before Christmas. Many had been knitted by our folk and others by knitters from all over the circuit, these provided great Christmas blessing to the finders that Saturday morning.

At Christmas on Christmas Eve we adapted a Bible Society nativity play to meet our children's talents. This was lovely, and brought in children who we don't see regularly. Although a great deal of work it is always well worthwhile and much appreciated.

All in all, we have had another successful year, and as ever we look forward to the next with God filled anticipation. Sundays continue to be challenging, as we never really know who to expect, but we have a few more regular families now so we love and pray for them. And we continue to pray for all the others who we only see occasionally.

Thank you to all who give up time to help us with this so important work, because it takes a whole Church to raise a child, so you are all important.

Sally



## Youth Work Annual Report

It's been a year full of activity and deepening relationships. Our groups expand and contract unpredictably, so our activities need to be flexible as well as diverse. A new number of younger members are regularly with us on a Sunday morning and once a month at Garage Club gatherings.

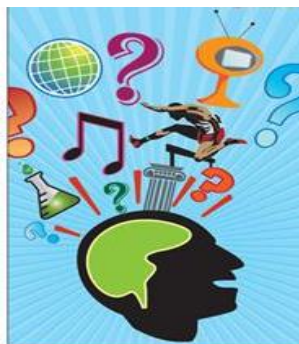
**Sunday Youth** on a Sunday morning can regularly see five attending, with more when we have a specific project. The age-span is ten to sixteen, which is feeling increasingly a stretch. Leadership is mainly by Cathy Morling but supported by Jean Treleven and other Church members when the need arises. Just as the year draws to an end, we are delighted to welcome Michelynne Bassue to our team and the Sunday Youth are enjoying getting to know her. They engage well as a group whether in games or discussions, bible study and reflections. The sense of belonging has deepened this year, helped by **Linger Longer** once a month after Church, rehearsing for the Youth Christmas Drama and activities with **Garage Club** such as a Cinema Outing at Christmas.



Our Sunday morning activities continue to be diverse, mainly using **Youth For Christ** material, but also continuing with sessions to encourage participation in worship with the Youth Band and singers preparing a song usually for the All Age Service on a different Sunday. We have seen less of our musicians who have been unable to commit regularly, but the number of singers has increased considerably and then other youths enjoy preparing the visuals to accompany the song that is being prepared. We are so grateful to Sue De Gruchy for helping us with arrangements for the musicians, for Libby Farnon and Helen Parker's support and Ben Shaw regularly supporting or leading on the piano. This creative session hasn't developed into other worship contributions such as Drama yet, but the rehearsals and two showings of "God's Big Project Meeting" at Christmas and New Year went very well.

**Garage Club** - Sunday evenings once a month, means lots of fun at the Manse for tens to teens, and this year we gained a few more girls. This group includes young people with no other church connection, some from other denominational churches, from Bethesda Methodist Church and our own Centre Youth. Forty-five minutes of games, twenty minutes for food, twenty minutes on faith. Will Waller came back one month and shared his faith story with the group and is keen to be involved in projects in the future that nurture and deepen the faith of our Youth. The dynamic has changed this year and the age range is beginning to find its natural cap, as our 14-15 year olds begin to move on. We would love to be able to offer a different programme for them for year 10 or 11 and above. Encouraging our older youths to participate in other ways in our Church's life will be important in the coming year, deepening their sense of belonging and worth. Could we create a role for a Youth Steward? Could we train one or two as Sound Operators? We hope to find ways for all our youths to deepen their spiritual lives in the coming

year by encouraging more of them to engage with *New Song*, *Jersey Keswick*, *Jersey New Wine* and possibly run a *Youth Alpha*, but longer term a mission trip would be perfect for the older youths.



### **Women's Ministry at The Centre**

The distinctive and intentional ministry for women at the Centre continues in the shape of 'Recharge' – a morning of time to receive, reflect and recharge the spiritual batteries. Numbers are around 30 – 40. Cathy Morling has shared the leadership and organisation with a team of others this year, releasing many wonderful gifts and moving 'Recharge' from a dependency model.

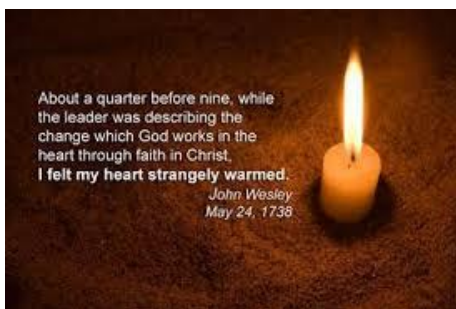
There have been three 'Recharge' gatherings this year. The first in May 2016 coincided with Pentecost and so was an exploration of the Holy Spirit in creative and symbolic ways led by Cathy Morling and Naomi Bidmead. The second was in November 2016, focusing on 'Counting Our Blessings' which included a bible study of Psalm 23 led by Naomi, a testimony from Cathy's charity trip to Bolivia and inspiring prayer stations. The third was in February 2017 and was devised and led by Helen Parker on the theme of 'Taking Mary Moments in a Martha World' with input from the team. The hospitality is always beautifully managed by Allison Gregory and Lou Hicklin's creative input and gifts are invaluable.

Each gathering is unique and meaningful for those attending. The feedback is very positive and we now have a database of contacts which we use to inform of the next gathering, as well as producing high quality publicity postcards now with all three dates for the year ahead printed on them.



The expense for each morning is relatively small and a basket for donations towards the cost of the refreshments offsets most of it.

'Recharge' has brought the women at the Centre closer together, created opportunities to grow in fellowship with women from other churches and across denominations. There is plenty room for growth in this area and an appetite for retreats. We look forward to another year of distinctive and special ministry, encouraging diverse leadership, strengthening relationships, deepening our spiritual journeys and listening to God's call for any developments in the coming year.



### **Report from Management and Finance Committee**

As previously stated one major part of the Committee's work is the repair and maintenance of the buildings and £65,000 has been allowed in the budget for this purpose. Work is required on the gutters as well as both the exterior and interior of the West windows. Gilberto is installing insulation in the loft and a safety rail has been fitted in the gallery but will still need strengthening.

The nursery is keen to redesign the garden and play area and their plans are awaited. These may involve the removal of the Camellia tree as birds using it are causing a real health hazard. Pigeons in this area are also a problem and need to be controlled.

Teresa is expecting her third child next August and cover will need to be provided during her maternity leave of 18 weeks.

Ben Shaw who leases Flat 1 Ruby Ferguson House has requested a continuation of his 6 months' lease of the flat and the Committee has agreed to this for a further year.

Life at the Centre continues to be busy and we are fortunate that we have such a dedicated team to assist in the running of the Centre as without them we could not operate at the current level and we are ever grateful for their hard work and dedication.

Finally, the food bank is an important part of the mission work of the Church and this has increased in the past year. Whilst assistance is given by the Circuit and the Churches within it proper funding needs to be in place for this important work. Therefore, the Minister's Discretionary Fund will be used to fund the food bank as well as to assist where needed at the discretion of the Minister and the treasurer. The balance of the Mission and Charities Fund has been transferred to this account and all funds received for the food bank will be credited to this account. The annual limit of the transfer to this account from the General Fund will be £10,000, which will be reviewed annually.

Peter Luce





### **Cafe report**

The café continues to run smoothly. Although much quieter in the school holidays, we still have our regular customers. Depending on the weather, the sunshine encourages mums to take their children to the parks/seaside/zoo etc. hence a very quiet café!

I would love to see church members frequent the café more often and support the work.

Sadly, we lost our dear friend John McCarthy in November. He was a regular in the café for over 4 years and is greatly missed by all who knew him. A large thanksgiving service was held for John supported by friends from many walks of his life including Grace Trust 'ladies from the Town Hall', local shops, cafes, neighbours and of course all who knew him from the centre. Afterwards we gathered in the café for sandwiches, refreshments and chat about John.

We held our Christmas lunch on the 9<sup>th</sup> December for café volunteers and staff @ the centre. Although a lot of work it was a rewarding time of sharing and community together.

We have had Sarah working with us for the past 6 months. After an initial 6-week trial, she enjoyed the experience so much that Jersey Employment Trust decided to extend her time to 6 months.

This is a beneficial 'Back to Work' scheme where the States of Jersey pay her to work but after 6 months the hope is that she has had enough experience to move on to further employment.

This for me has been a very rewarding experience to see her grow in confidence and self-esteem. She has now gained employment in the kitchen of a care home and is delighted to be in full-time employment.

Many of you may know Julie who served faithfully in the café for 4 years. She retired at Christmas and again her cheery face will be missed. We had a lovely celebration for her 60<sup>th</sup> birthday in February.

Again, a big thank you to all who volunteer to help in the kitchen during my absence.

Many thanks, Annie



### **'It's getting busier all the time' – A report from the office.**

This past year the growth both in café custom and in numbers of people attending the children's groups has been matched by an increase in other work of the centre.

#### **Lettings**

Every week we let our rooms to

- AA – weekly & quarterly meetings
- Emma-Jane's Dance Academy – Monday to Saturday in term-time
- Freedom for Life - full-time use of two rooms in Ruby Ferguson House. (They help those who are struggling with issues related to criminality and addiction).
- Street Pastors – every Saturday night
- Health and Social Services, Special Needs Day Services – Tuesday to Thursday year round

In 2016 Family Nursing and Health Care approached us and now they hold their Community Nursery Nurse Weaning Group Sessions in the Hall every month.

It is also good to see increased use of the worship space during the week; with Toddler church on a Monday and training of Talitha volunteers during some weekday evenings.

The Centre is also used regularly as a meeting place by the Christian Unity Group, St Helier Prayer Lighthouse and the Jersey FairTrade Group.

On top of these regular bookings there are also school services and various concerts throughout the year.

The large number of people with differing requirements using the building does mean that there can be problems with scheduling, door handles, toasters and of course parking. But Centre users are generally happy to work with each other to solve problems – we are a community not a business.

One side-effect of all this increased use is that the Centre needs more cleaning whilst simultaneously there is less time for this to happen. Remarkably Teresa continues to keep everywhere spotless – even though she is now working regularly in the café as well. Her hard work and extremely high standards make a very big difference to the Centre.



#### **Food Bank**

The Food Bank is still needed as much as before.

Our Christmas Giving Trugs were so generously filled that we have had to set up extra storage in the back vestry. Le Gallais & Luce, Waitrose and the Co-Op have also all had collections for us over the past year.

In Autumn 2016 Food Bank demands on my time and our resources grew to such an extent that they were unmanageable. In October alone we had 43 visits from people needing help. We met with Citizens Advice – who send us most our referrals – and explained the situation. As a result, they now forward applicants to other Food Banks, if appropriate and the need is not immediate, and this has eased the pressure on us. Demand for the first 3 months of 2017 was on a par with the first 3 months of 2016.

From 1 April 2016 to 30 March 2017 we had 280 visits and gave out 317 bags of groceries and £5,080 in Sandpiper vouchers (for electricity and fresh food).

We meet regularly with the other main Food Banks as well as with Social Security and States policy makers. At the Social Security meetings, we tackle specific problem areas related to payments (such as payments made in lump sums rather than spread out, or the gap when people are released from prison or go home from hospital after a long stay) and generally improve understanding between Social Security and the Food Banks. This co-operation is very useful; the Food banks can pass on our experience of who is struggling and we gain contacts who help in individual cases.

When I give out food and vouchers I often offer people a hot meal or drink in the café. I hope that we can also offer friendship. Many people in poverty suffer badly from loneliness as it costs money to go out and socialise. All five applicants whom we helped on the Tuesday after the Easter weekend said they had seen no-one over the 4 days' holiday. It is good when the café supplies a warm friendly place for them to sit and chat.

Sarah



### **Report from Nestling Day Care Nursery.**

#### **Nestling Day Care Nursery Committee**

Chair	Hilary Bullock
Secretary	Gill Luce
Treasurer	Jackie Ollerenshaw
Committee	Tony Morling, Peter Luce, Jane Pointon, Enid Davis, Nance Hicklin.

The Nursery Committee has met regularly during the past twelve months to discuss any issues brought to its attention.

Louise Jones-Butel continues to manage improvements to the running of the Nursery.

The office has been extremely busy dealing with an ever increasing paper chase and record keeping which we are obliged to do by the States of Jersey Education Registration Department.

Two members of staff have each completed a Management Course and two are at present studying for Level 3 in Child Care.

The Nursery Committee continues to invest in training our staff to the highest standards.

Nestling Day Care Nursery has been almost full for the past year. We are working extremely hard to ensure that we provide the best possible care for the children in Early Years Education.

The refurbishment programme is nearing completion. The Nursery looks brighter and more up to date. Professional work has been carried out by painters, plumbers and electricians. Voluntary contributions to this refurb by Martin Le Boutillier, David Vasselin and Gordon Bullock with their combined skills in carpentry, tiling, electrical and painting are continually being carried out.

Lou Hicklin has helped us this past year with her advice and sewing skills and added greatly to the overall new look for each room.

We are most grateful to all our volunteers for their cheerful and enthusiastic support.

The children look forward to their weekly singing with Sally Vasselin and we record our thanks to Sally for her contribution to their education.

In August parents, grandparents, staff and all the children in the Nursery gathered in the Church to celebrate Graduation Day for the children moving on to Primary School. It is an important day in our calendar and thoroughly enjoyed by all.

Nestling Day Nursery is very much a team effort. It is essential that we support our staff in the very demanding work of caring for the children who attend Nestling.





## **Minutes of the Annual General Meeting held on Sunday May 1<sup>st</sup> 2016**

**Opening Devotions:** These were led by Rev Tony Morling (TM) followed by Hymn 594: Lord Jesus Christ.

**Attendance:** The attendance sheet was circulated and returned with apologies from Peter & Sue De Gruchy and Libby Farnon. Sixty members were attendance.

1. **Minutes of the Annual General Meeting** held on 26<sup>th</sup> April 2015 have been circulated, agreed and signed off. TM advised of the resignation of Pat Tourtel as Church Council Secretary and thanked her for her many years of service to the church. TM asked the members for their agreement that Lou Hicklin be appointed to this position. All agreed.
2. **Membership Changes:** TM advised two new members have joined by transfer in the past year: Helen Parker and Leah Gitonga. We rejoice in their presence within the church and all those new to worship. It is hugely enriching to have members of the world church as part of the Centre's life.
3. **Church Stewards:** David Vasselin (Senior Steward) requested that Kay Papworth be elected to the position of steward. Kay has been shadowing DV for the past month and feels this is her calling within SHMC. TM introduced Simba Mashiri a member of the Methodist Church from Zimbabwe and his willingness to stand as a Church Steward. Both were unanimously elected by the meeting.

David Vasselin, Pam Marett, David Hicklin, Ann Paul were re-elected with the meetings strong affirmation.

DV advised of Jan Le Boutillier's completion of seven years as steward. He expressed deep appreciation for her ministry of care, wisdom and service which has so enriched the ministry of the church. Flowers were offered as a thank you from SHMC for all her hard work and TM spoke of the first time he met Jan, when she visited the Manse on the Morlings' arrival in Jersey. She was laden with a fruit basket and a warm welcome and the Morlings' felt immediately at home.

4. **Appointments to church council:** The meeting re-elected Gill Luce, Libby Farnon, Enid Davis, Martin Le Boutillier, Nance Hicklin, Sue de Gruchy, Maureen Rayson, Roy Picot. TM asked the membership to also accept Pat Tourtel onto the council as a representative from the AGM. Agreed. TM advised that Lou Hicklin would remain in her new position as Secretary to the Church Council.
5. **Reports:** Circulated to all members of the church one week before the AGM in order that all member had an opportunity to familiarise themselves with each report. No comments were received in relation to the reports, therefore, all were agreed. Thank you to all those responsible for submitting reports which indicate encouraging signs of renewal and God's gracious hand upon our work.
6. **Finance:** Peter Luce offered his thanks to David Picot for his commitment to auditing the church accounts for many years who now feels that the time has come for him to step down. PL advised Alex Picot would be the appointed firm and the committee thanked David Picot for his faithful commitment to the church.

Funds have been received from the Circuit for our ongoing outreach mission work. We are hugely grateful to the Circuit for the commitment to resourcing our outreach and the strong sense of 'being in this together'. They have shown and continue to show their full commitment to the mission work being carried out at SHMC. PL advised good savings were being made following the work arrived out on the heating system. PL advised that the reserve policies have been reviewed and £130,000 has been transferred from the Nursery account to the General Funds account. The committee were assured that a 4-year

financial plan was now in place. The committee were advised that building maintenance costs were ongoing and must be considered an ongoing expense. Martin's ministry in this area is hugely appreciated.

PL advised the SHMC Community Group has been organised and charitable status granted. TM offered the accounts for agreement and asked if there were any questions from the members. Philip Le Brocq asked if the church was a listed building and whether there was any States support offered towards the upkeep of the building. PL and TM were not aware of any such scheme at the present time but would consider this matter going forward. The accounts were agreed.

TM thanked PL for his continuing work on behalf of the church and tribute was offered to Di Toole for her many years' loyal service on the Management and Re-development Committee. PL has now taken over the position of Chairperson on the Management Committee and the members expressed their thanks to PL for his unswerving commitment to the work of SHMC.

#### **Minister's Comments Time for Sharing**

TM spoke about the necessity for all church members to seek God's energy as we reach out in love to the local community. He urged everyone to use their God-given gifts to witness to Christ so that we fulfil Christ's commission to make disciples. To this end he urged everyone to pray for God's renewal.

Roy Picot mentioned his concern about loneliness among the elderly within our community and whether a Friday lunchtime gathering might be possible. Barry and LH spoke regarding the possibility of outside speakers coming into the church to offer insight into the community around us. Jane Pointon expressed her pleasure in seeing so many more children within SHMC and just how beneficial Sally Vasselin's work is. Thanks, and admiration were offered to Sally Vasselin for her commitment to spreading the gospel to families. Ken King expressed his thanks to all who offer their time to reading the Lessons during Sunday Service. LH offered thanks on behalf of the members to TM for his incredible commitment to the church and to reach out to the community and take SHMC to businesses in the area. Other comments of encouragement and guidance were communicated subsequently in writing.

7. **Final Closing Comments:** TM asked for prayers for the appointment of a new member of staff to work with Sally Vasselin and Annie Vatcher.

Prayers were requested for Langdon Katsande from Zimbabwe and for his mother during her illness. TM thanked Hilary for her ongoing commitment to the Nursery.

8. **Closing blessing**

9. **Next AGM:** To be announced in the 2016-2017 Year Handbook & Prayer Diary



11.15am

### Annual Church Meeting Agenda

Welcome & Explanation  
Hymn 481

The Lord's my shepherd, I'll not want

Minutes of May 1<sup>st</sup> 2016  
Apologies

Attendance/apology record will be circulated:

Membership changes

Appointments

Church Stewards (Including re-elections and thanks)  
Reps to Church Council

Presentation of Reports

As distributed

Financial overview

Including nursery  
Thanks to Jackie & Peter Luce

Peter Luce

Minister's Comments  
Discussion

Leading into  
Our continuing journey

Hymn 410  
Blessing

Lord, your church on earth is seeking

-----

Name: (optional)

1) From reading the reports what things are a source of encouragement and thanksgiving?

2) What mission opportunities do you see opening up before us in the future? What might you be able to offer?

3) Are there any issues that you would like Church Council or the Committees to consider?